



# *Agriculture and the Farm Bills*

**Daryll E. Ray**

**CCA/CEU Agronomic Seminar**

**Holiday Inn, Murfreesboro, TN**

**January 31, 2002**

Agricultural Policy Analysis Center - Institute of Agriculture

The University of Tennessee

# Introduction

- **Why Do We Have Farm Programs?**
  - We Must Do A Better Job Telling the Story
  - Because Others Are Telling “Tree” Stories As If There Is No “Forrest”
- **The 1996 Farm Bill: A Classic Case of Reality Smashing Into Grandiose Expectations**

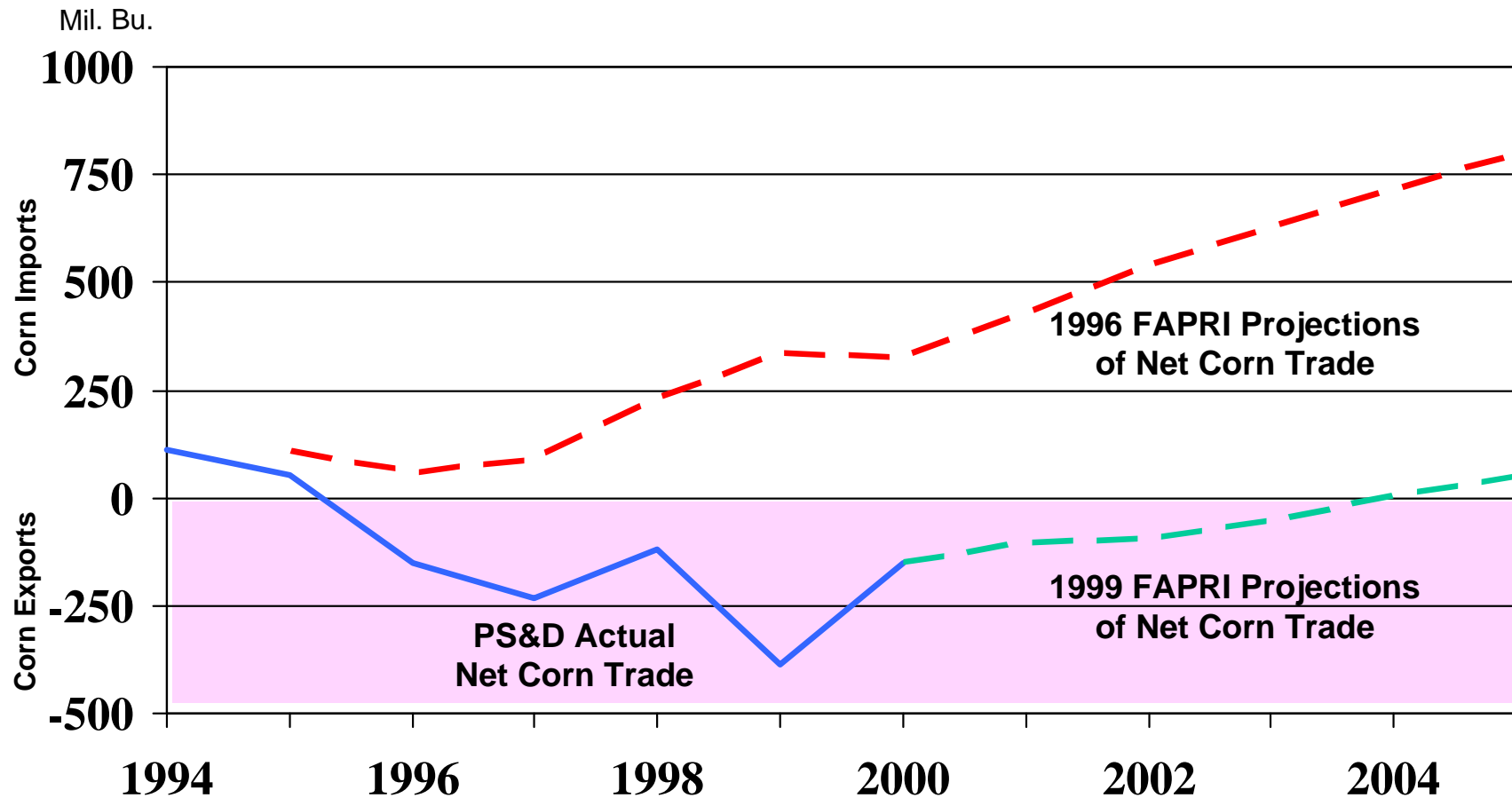
# Other Industries Self-Correct

- **If Price Drops, What Should Happen?**
  - **Consumers Buy More**
    - **Yes, Except for Food**
  - **Producers Produce Less**
    - **Yes, Except in Agriculture**

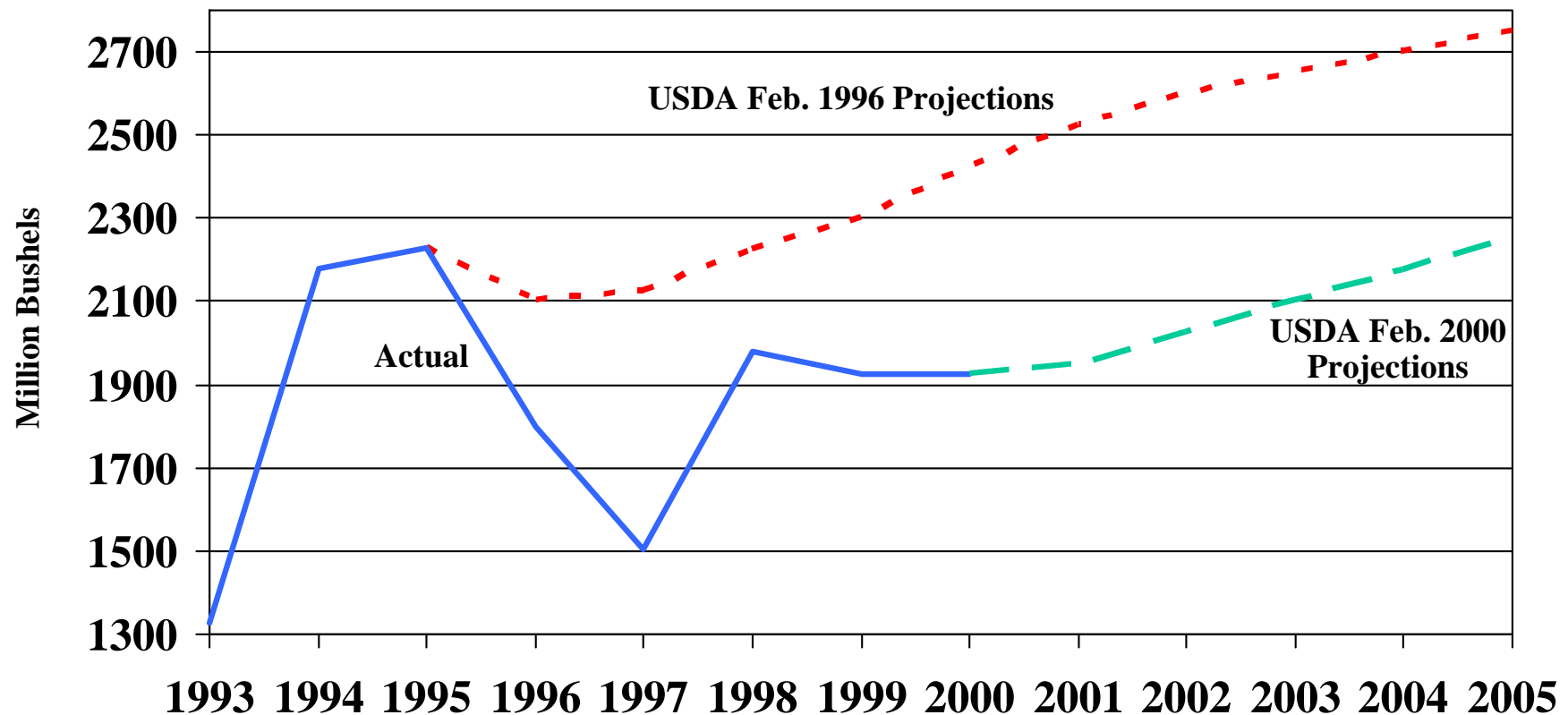
# Expectations

- **“High” Prices and Incomes Like 1995/1996**
- **Because:**
  - **Rapid Per Capita Income Growth in China/Asia Will Increase Demand and U.S. exports**
  - **With Planting Flexibility & Decoupled Payments Farmers Would Plant for the Market – Reduce Production When Needed**
  - **With No Brake on Prices, Importers Will Import More From the U.S. When Prices Decline –Increase Consumption & Reduce Production When Needed**
  - **With Marketing Loans, Competitors Would Not Be Under U.S. Price Support Umbrella –Reduce Production When Needed**

# Net Corn Trade for China: Actual and Projections, 1994-2005



# *U.S. Corn Exports: Actual and Projections, 1993-2005*

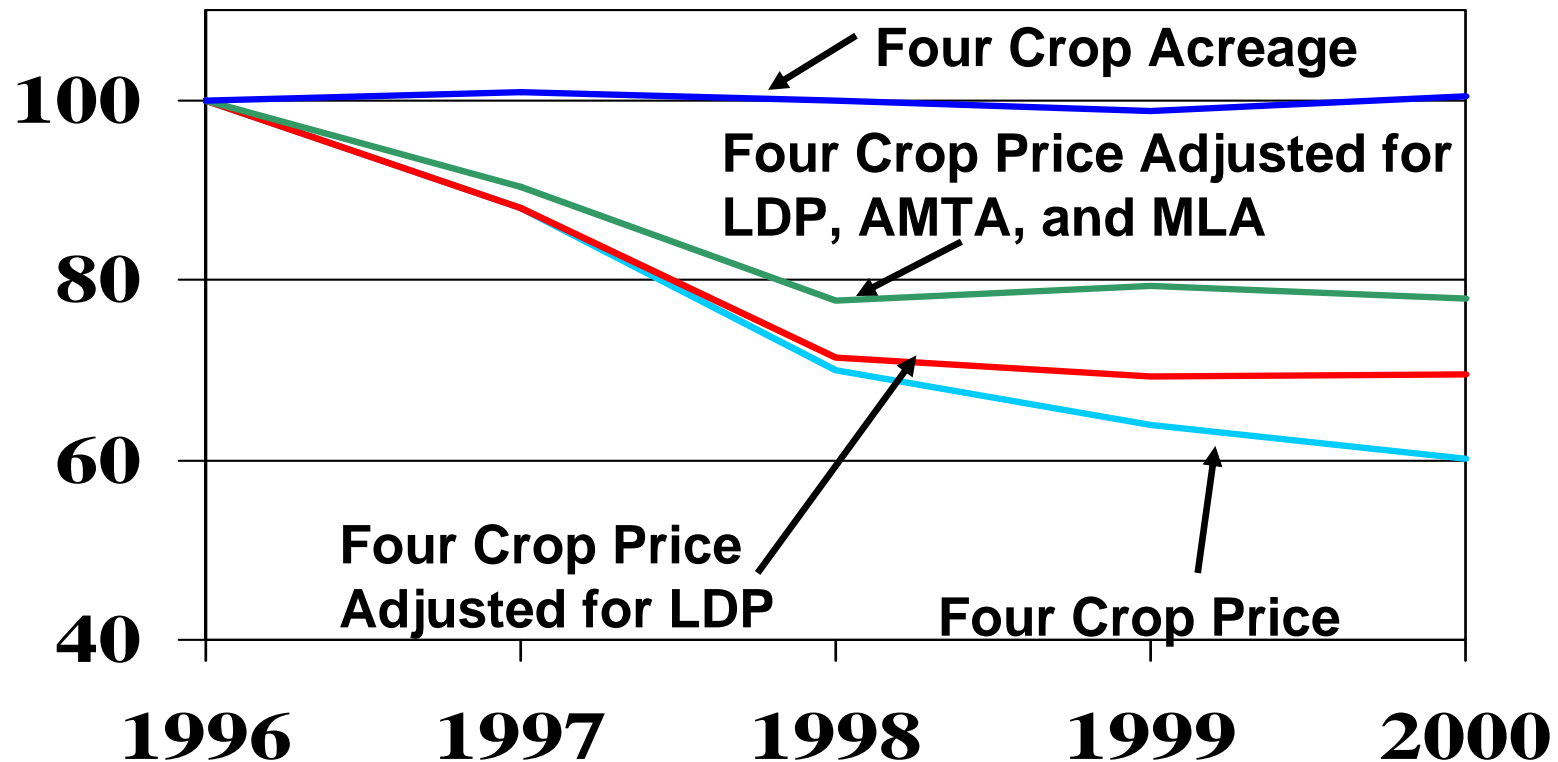


- **Expected Rapid Growth in Exports Did Not Occur**

# Expectations

- **“High” Prices and Incomes Like 1995/1996**
- **Because:**
  - Rapid Per Capita Income Growth in China/Asia Will Increase Demand and U.S. exports
  - **With Planting Flexibility & Decoupled Payments Farmers Would Plant for the Market – Reduce Production When Needed**
  - With No Brake on Prices, Importers Will Import More From the U.S. When Prices Decline –Increase Consumption & Reduce Production When Needed
  - With Marketing Loans, Competitors Would Not Be Under U.S. Price Support Umbrella –Reduce Production When Needed

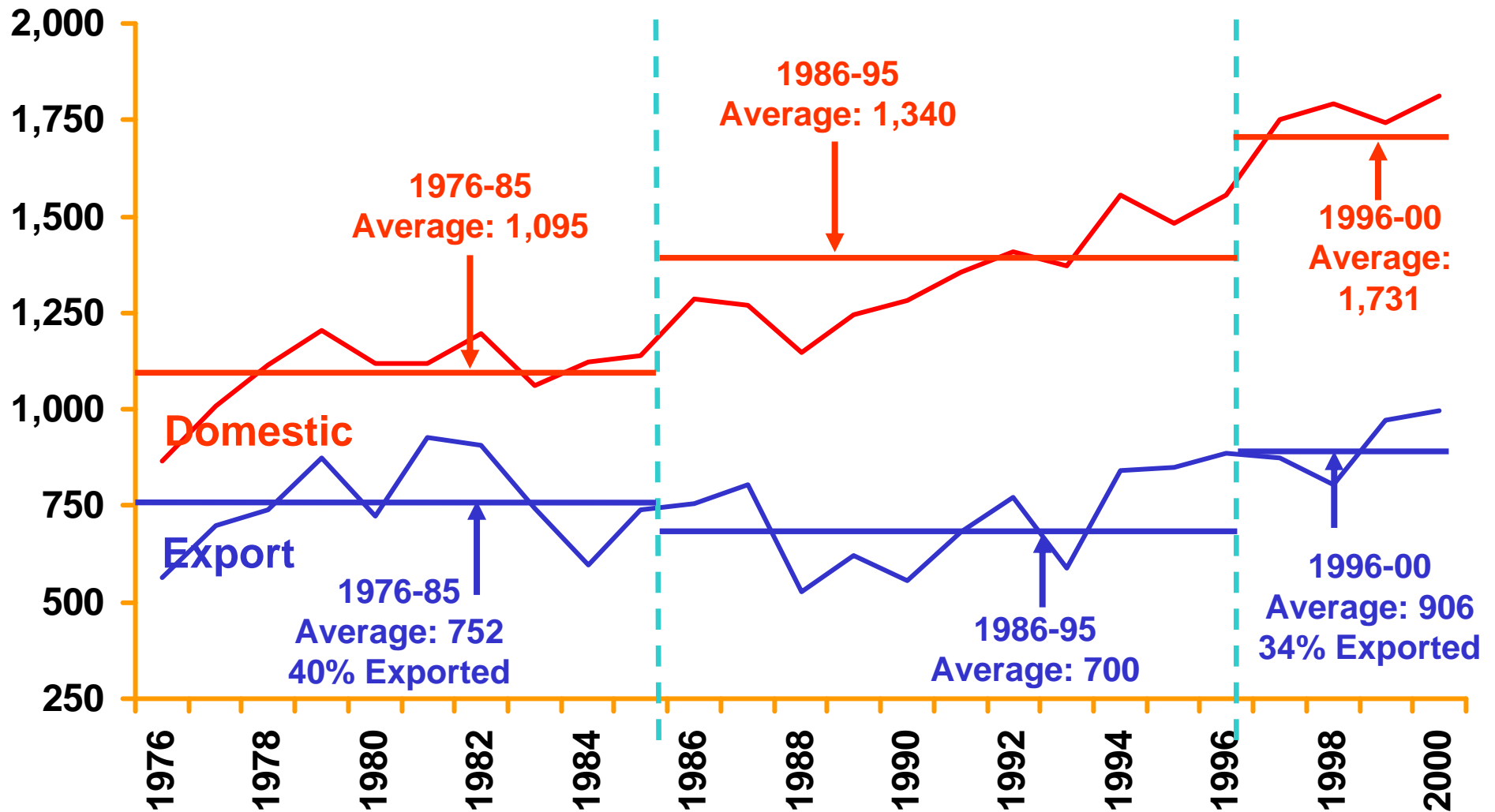
# *Indexed Four Crop Acreage, Price and Price Adjusted for LDP and Contract Payments*



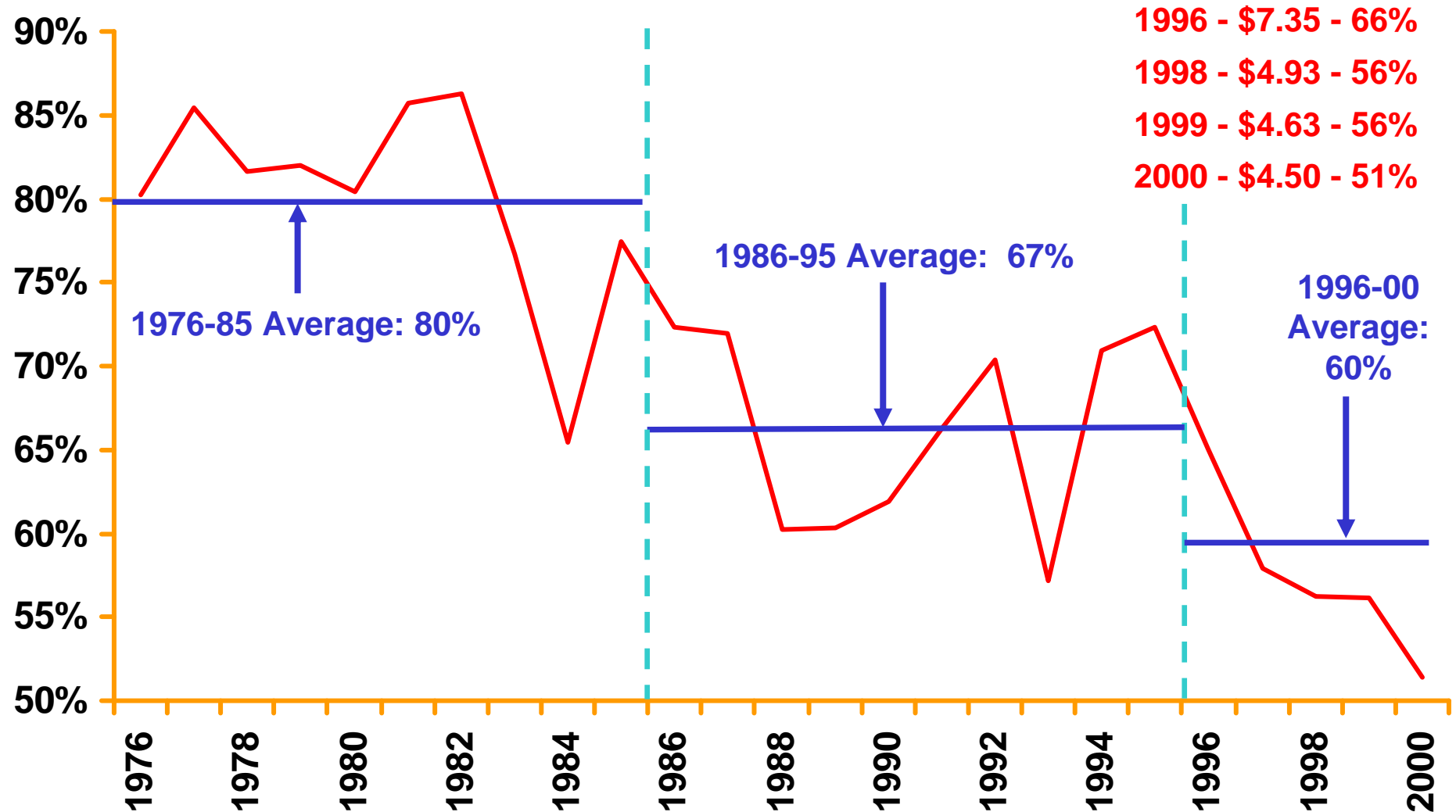
# Expectations

- **“High” Prices and Incomes Like 1995/1996**
- **Because:**
  - Rapid Per Capita Income Growth in China/Asia Will Increase Demand and U.S. exports
  - With Planting Flexibility & Decoupled Payments Farmers Would Plant for the Market – Reduce Production When Needed
  - **With No Brake on Prices, Importers Will Import More From the U.S. When Prices Decline –Increase Consumption & Reduce Production When Needed**
  - With Marketing Loans, Competitors Would Not Be Under U.S. Price Support Umbrella –Reduce Production When Needed

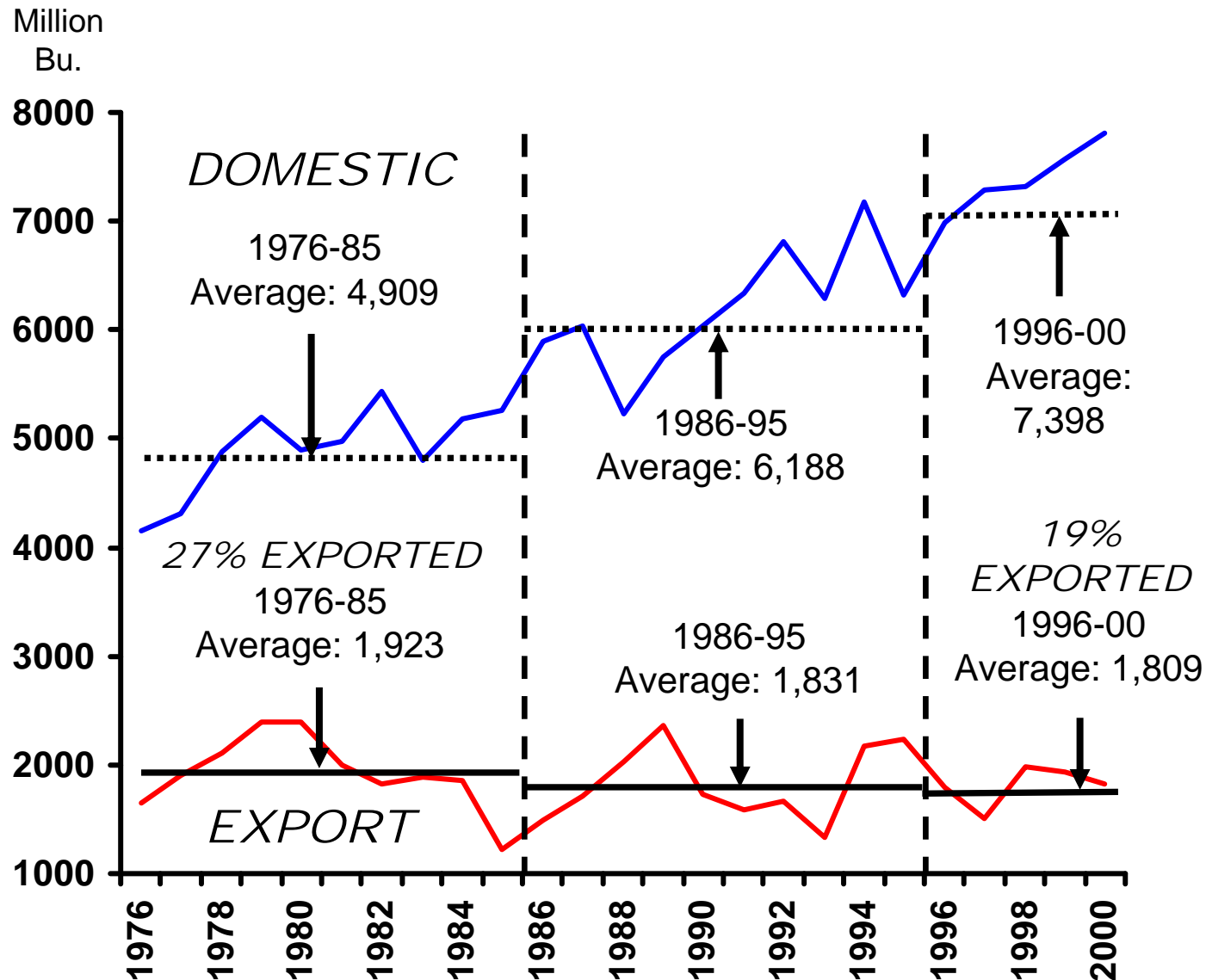
## U.S. Domestic & Export Demand



## U.S. Share of World Exports



## U.S. Domestic and Export Demand

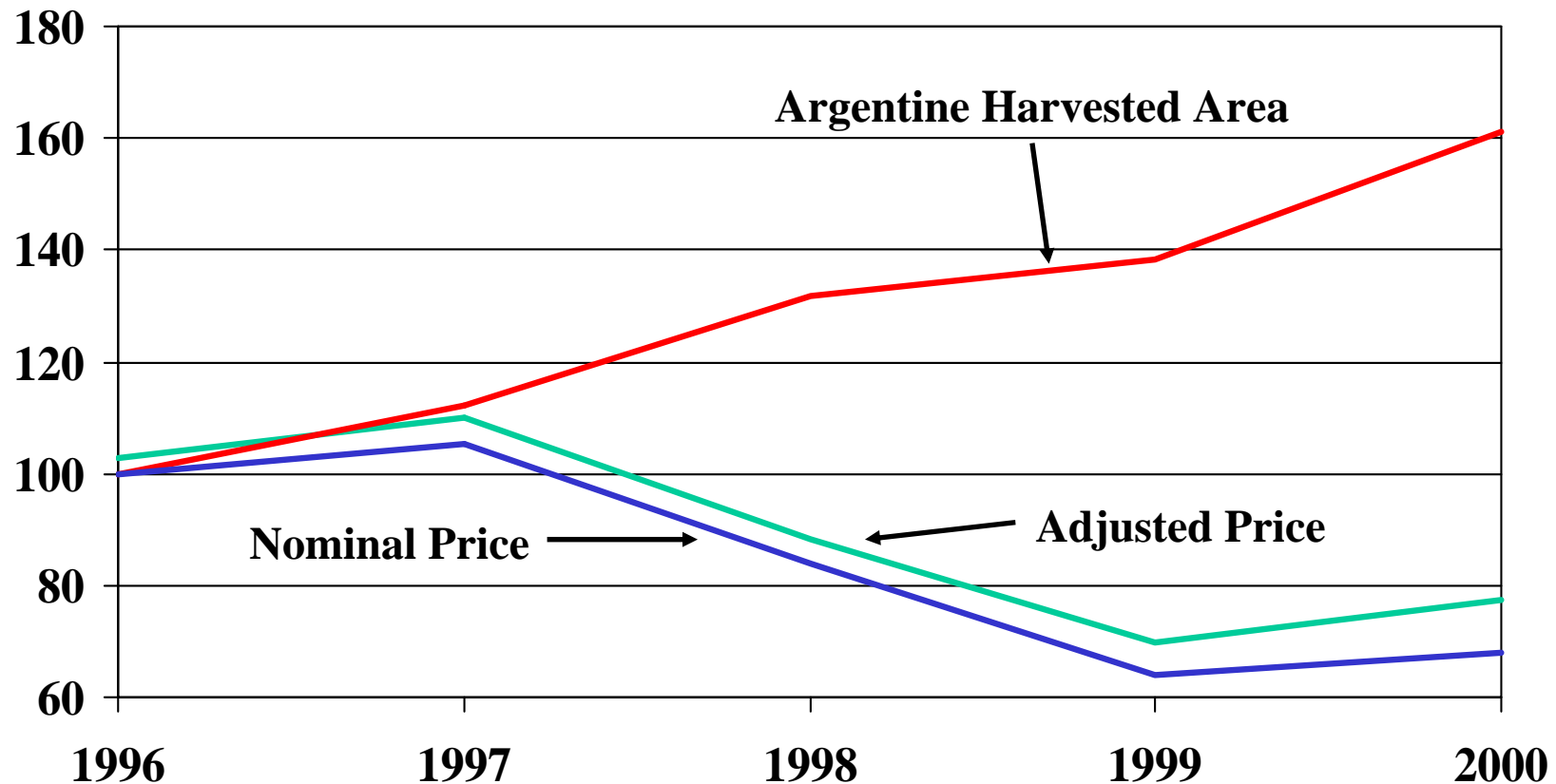


# Expectations

- **“High” Prices and Incomes Like 1995/1996**
- **Because:**
  - Rapid Per Capita Income Growth in China/Asia Will Increase Demand and U.S. exports
  - With Planting Flexibility & Decoupled Payments Farmers Would Plant for the Market – Reduce Production When Needed
  - With No Brake on Prices, Importers Will Import More From the U.S. When Prices Decline –Increase Consumption & Reduce Production When Needed
  - **With Marketing Loans, Competitors Would Not Be Under U.S. Price Support Umbrella –Reduce Production When Needed**

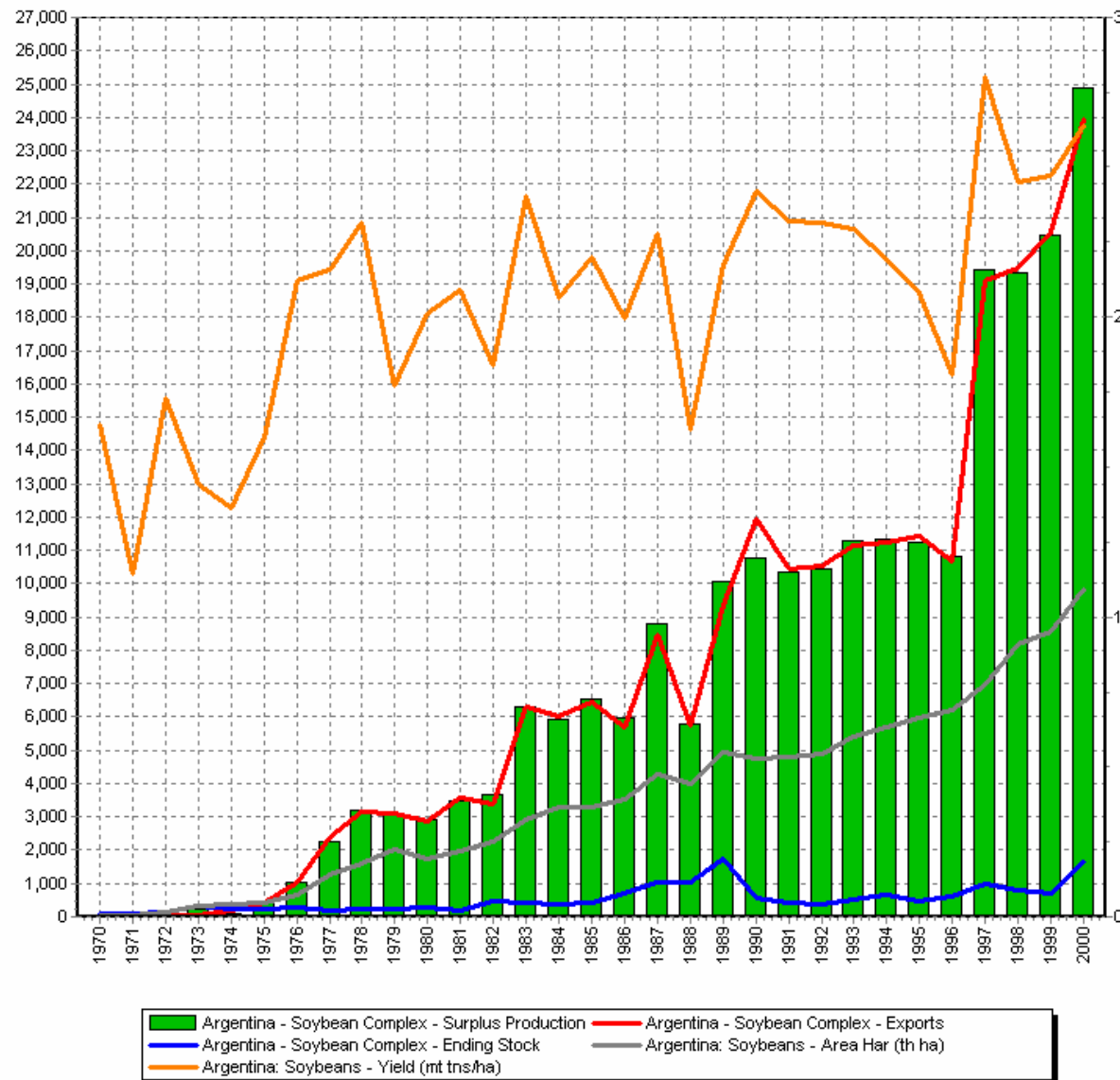
# Argentine Soybean Price\* and Harvested Area

Indexed 1996=100

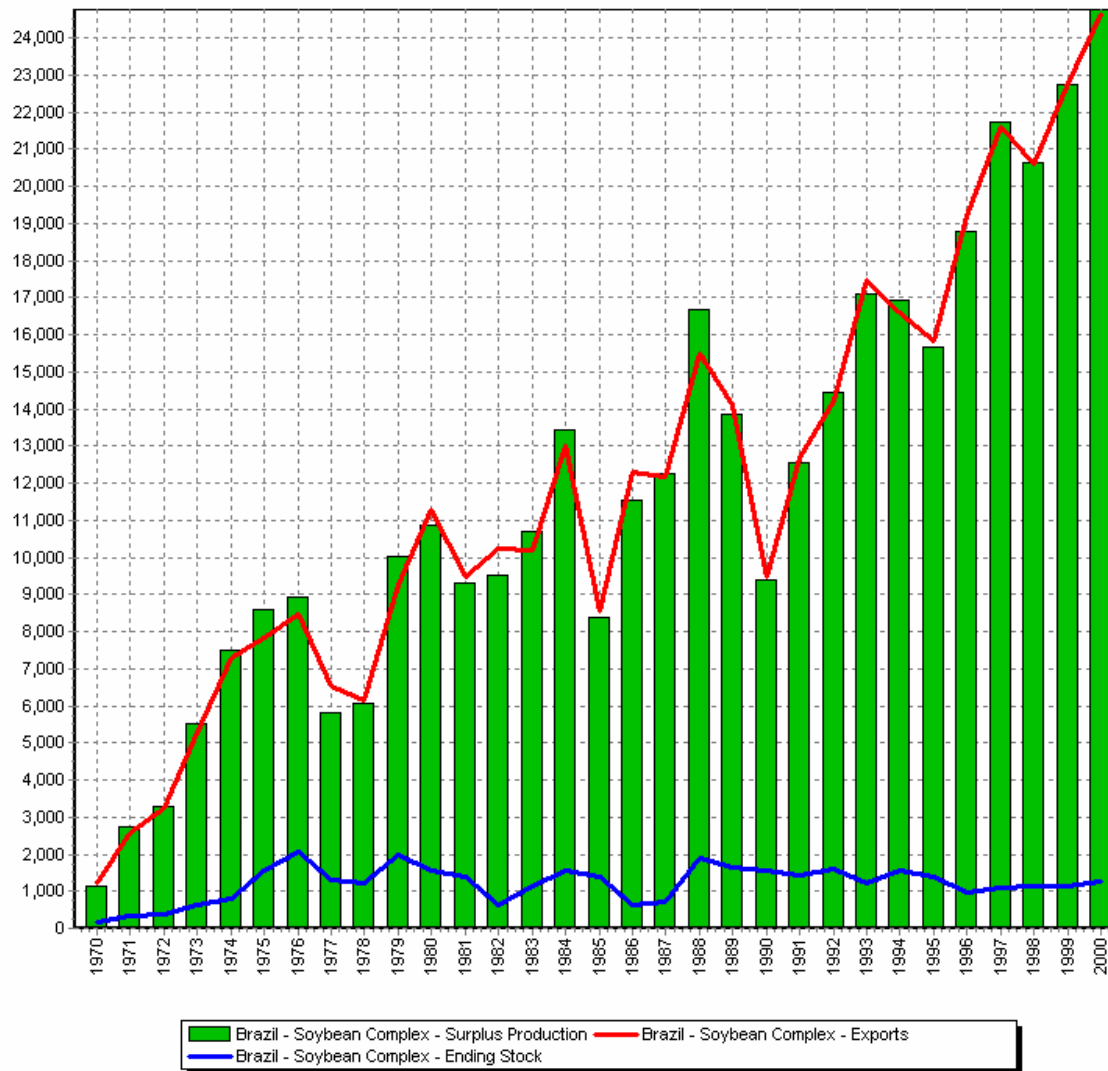


\* Price is the export price posted by Abiove, the Brazilian Vegetable Oil Industry Association. Adjusted price is adjusted for changes in exchange rate and inflation.

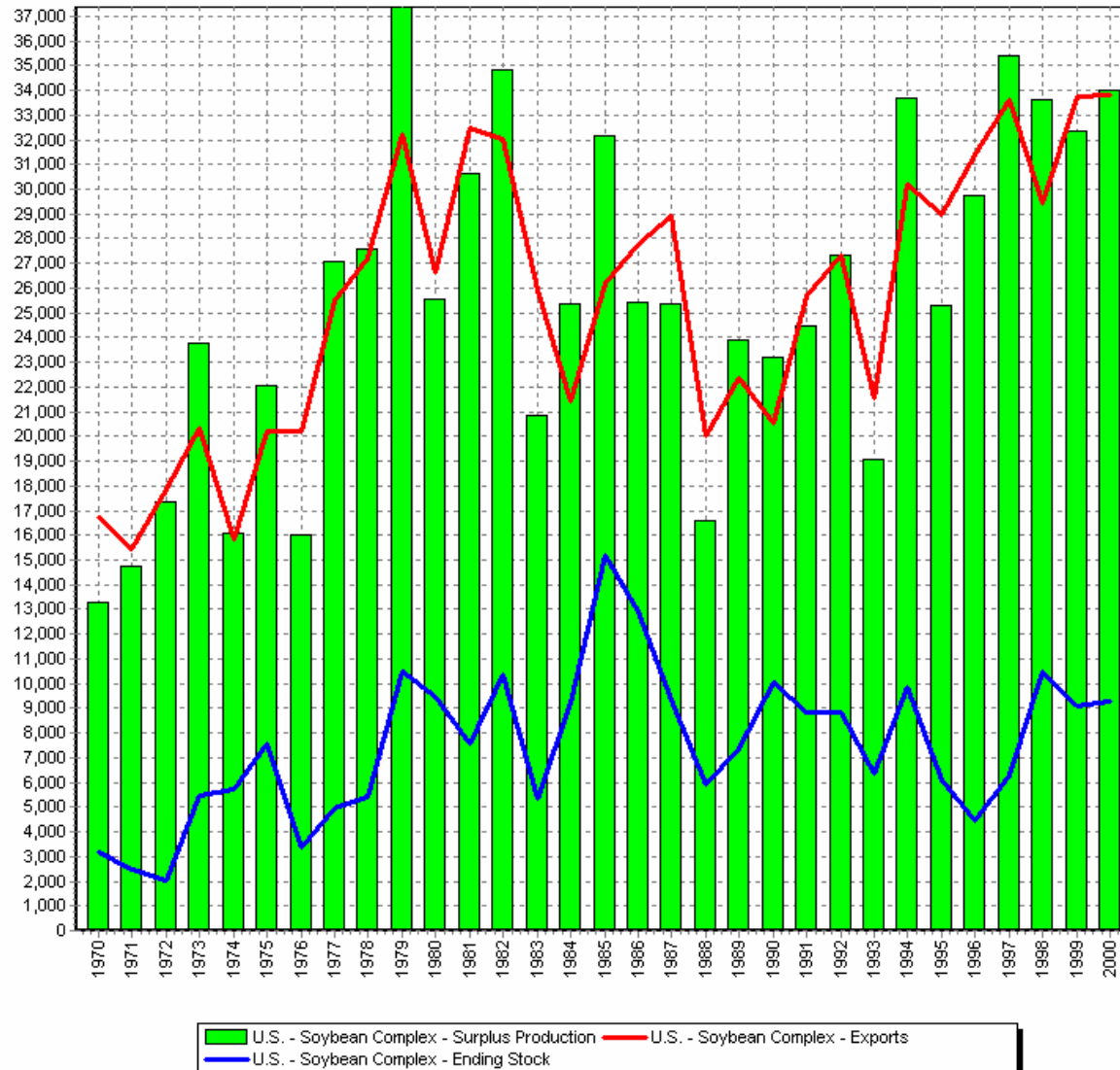
# Argentine Soybean Complex Exports and Surplus Production



# Brazilian Soybean Complex Exports and Surplus Production

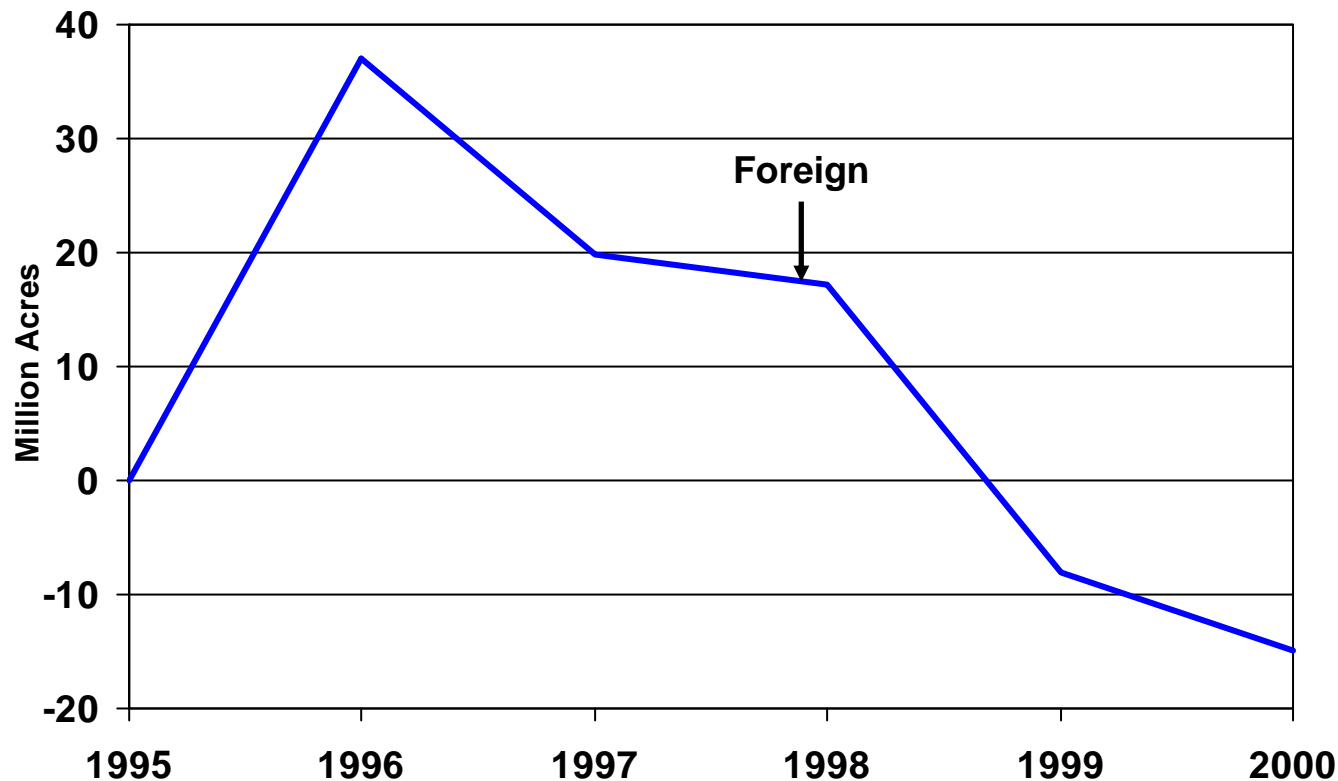


# U.S. Soybean Complex Exports and Surplus Production



# *Foreign Crop Acreage*

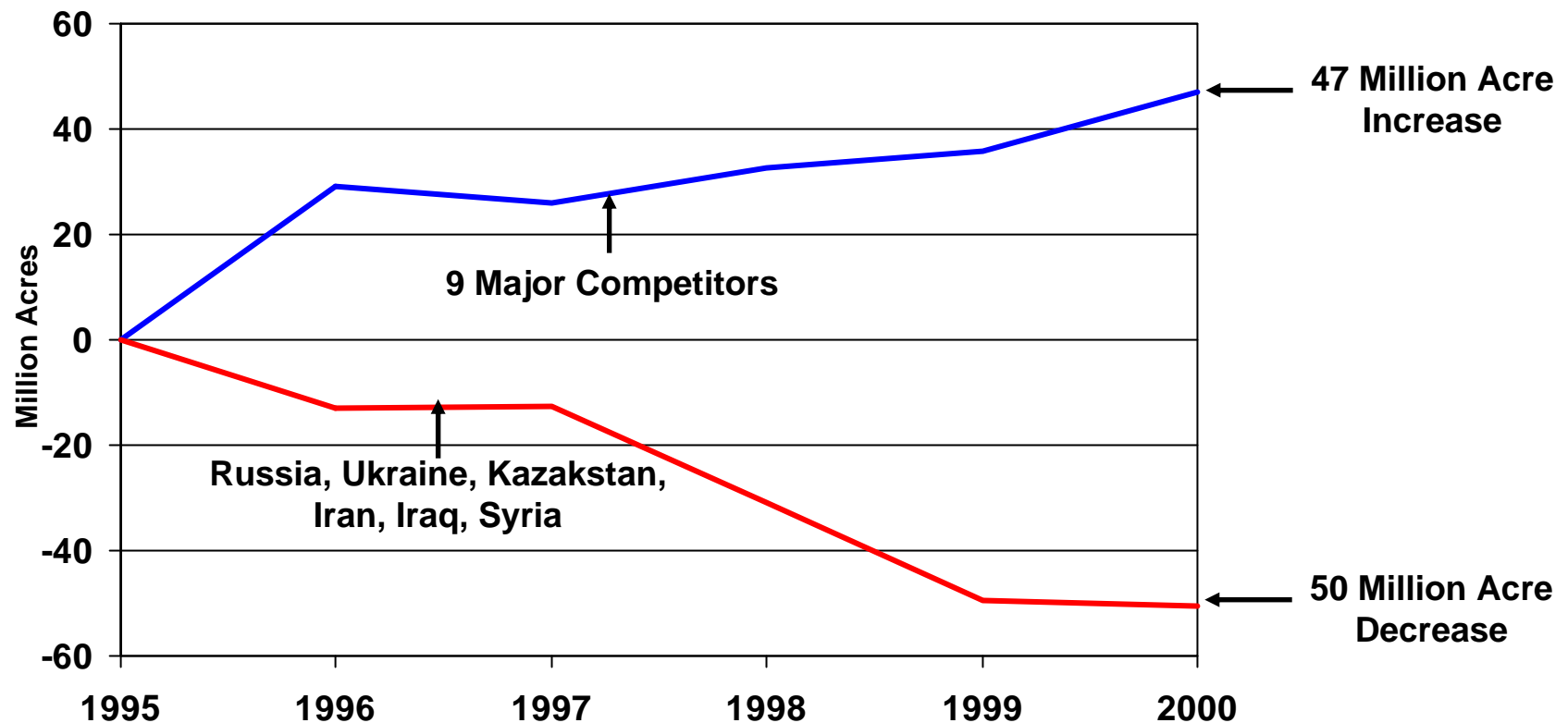
**Some have cited the 1999 reduction in foreign harvested acreage as indicative of the benefits of eliminating set-asides**



**Gain or loss in foreign harvested acres when compared to 1995**

# Foreign Crop Acreage

What countries did we hope would reduce their acreage when we eliminated set-asides?



Gain or loss in 9 competitors' and a grouping of 3 former Soviet Union and 3 Middle Eastern countries' harvested acres when compared to 1995.

*Agricultural Policy Analysis Center*

*University of Tennessee*

*<http://agpolicy.org>*

*[dray@utk.edu](mailto:dray@utk.edu)*

*Weekly Columns Available on  
website: [agpolicy.org](http://agpolicy.org)*