

Agriculture in 2010: The Impact of the Farm Bill

Daryll E. Ray

University of Tennessee
Agricultural Policy Analysis Center

*Michigan Agri-Business Association
Winter Conference, Lansing Center, Lansing, MI
Monday, January 13, 2003*

Introduction:

- Why have we had chronic price and income problems in agriculture?
- What important changes have occurred in the general direction of crop policy?
- Expectations underlying change in farm policy direction
- Reality Check: Expectations versus Experience
- Is current policy a pattern for the future?

What is the Problem?

- Technology expands output faster than population and exports expand demand
- Market failure: lower prices do not solve the problem
- No self-correction on the demand side
 - People will pay almost anything when food is short
 - Low prices do not induce people to eat more
- No self-correction on the supply side
 - Farmers tend to produce on all their acreage
 - No alternate use for most cropland

Traditional Policy Levers

- Government Stock Management
 - Loan rate/support price to set a floor price.
 - Limit price increases by Gov't & FOR released stocks
- Restrict supply
 - Short-term set-aside
 - Long-term Conservation Reserve Programs
- Expand demand
 - Domestic
 - Foreign
- Government payments
 - Coupled to production
 - Decoupled

Policy Changes Beginning 1996 Act

- No price support
- No stocks to moderate price spikes
- No annual set-asides
- Government payments used to support farm incomes
 - Some decoupled from production
 - Some not

Implications of Commodity Policies

- No price floor
- No emergency reserves
- No price ceiling
- Incomes are not supported, not prices
- Livestock producers and other users are subsidized
- Agribusiness input suppliers and output processors are subsidized

Expectations Underlying Change in Policy Direction

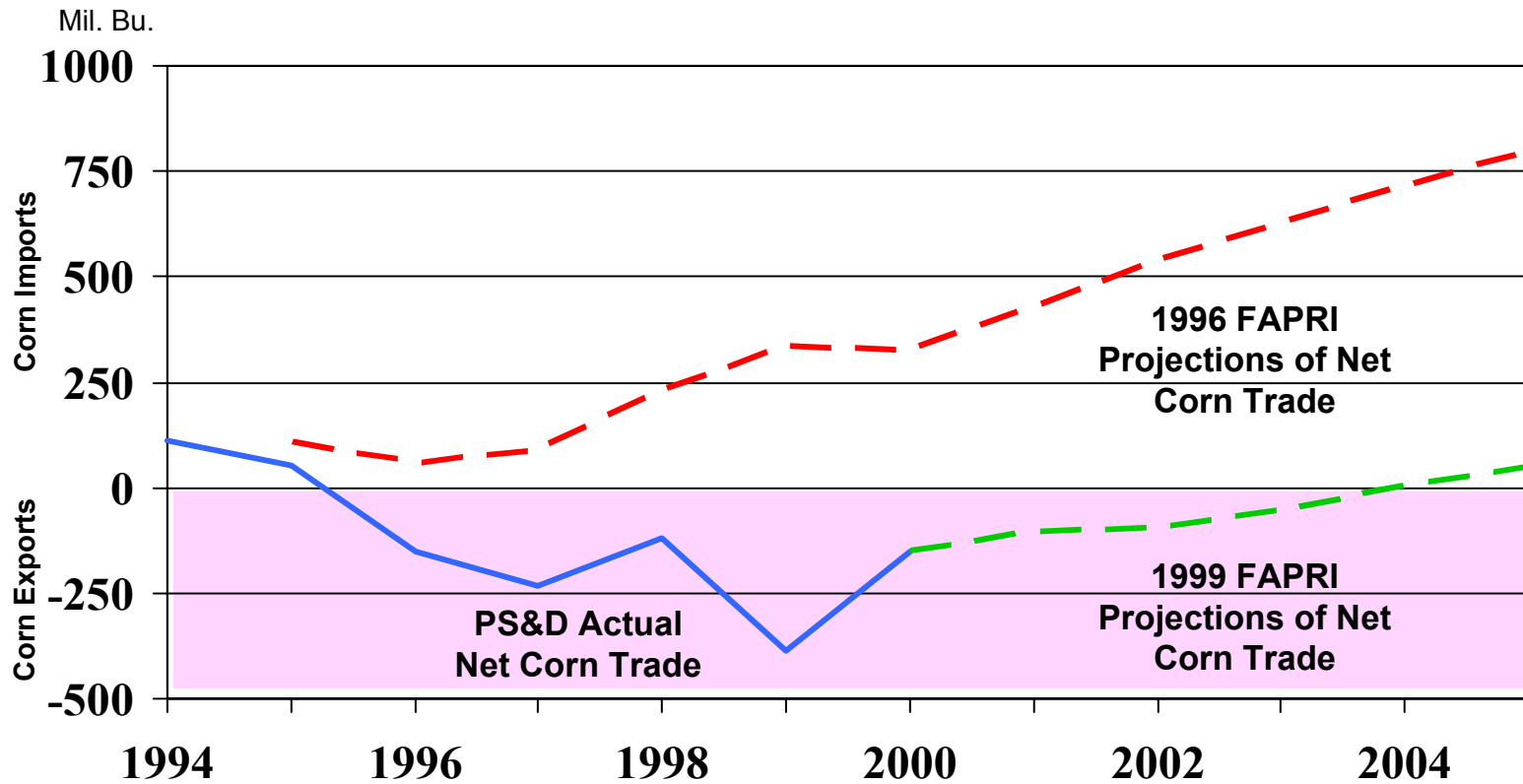
Continued “High” Prices and Incomes of 1995/1996 were assumed because...

- **Demand Will Grow as Fast or Faster than Supply** – Due to Rapid Per Capita Income Growth in China/Asia
- **Supply Will Be More Elastic** – With Planting Flexibility & Decoupled Payments Farmers Would Plant for the Market and Reduce Production When Needed
- **Export Demand Will Be More Elastic**
 - With No Brake on Prices, Importers Will Import More From the U.S. When Prices Decline – Increase Consumption & Reduce Production When Needed
 - With Marketing Loans, Competitors Would Not Be Under U.S. Price Support Umbrella – Reduce Production When Needed

Expectations vs. Experience

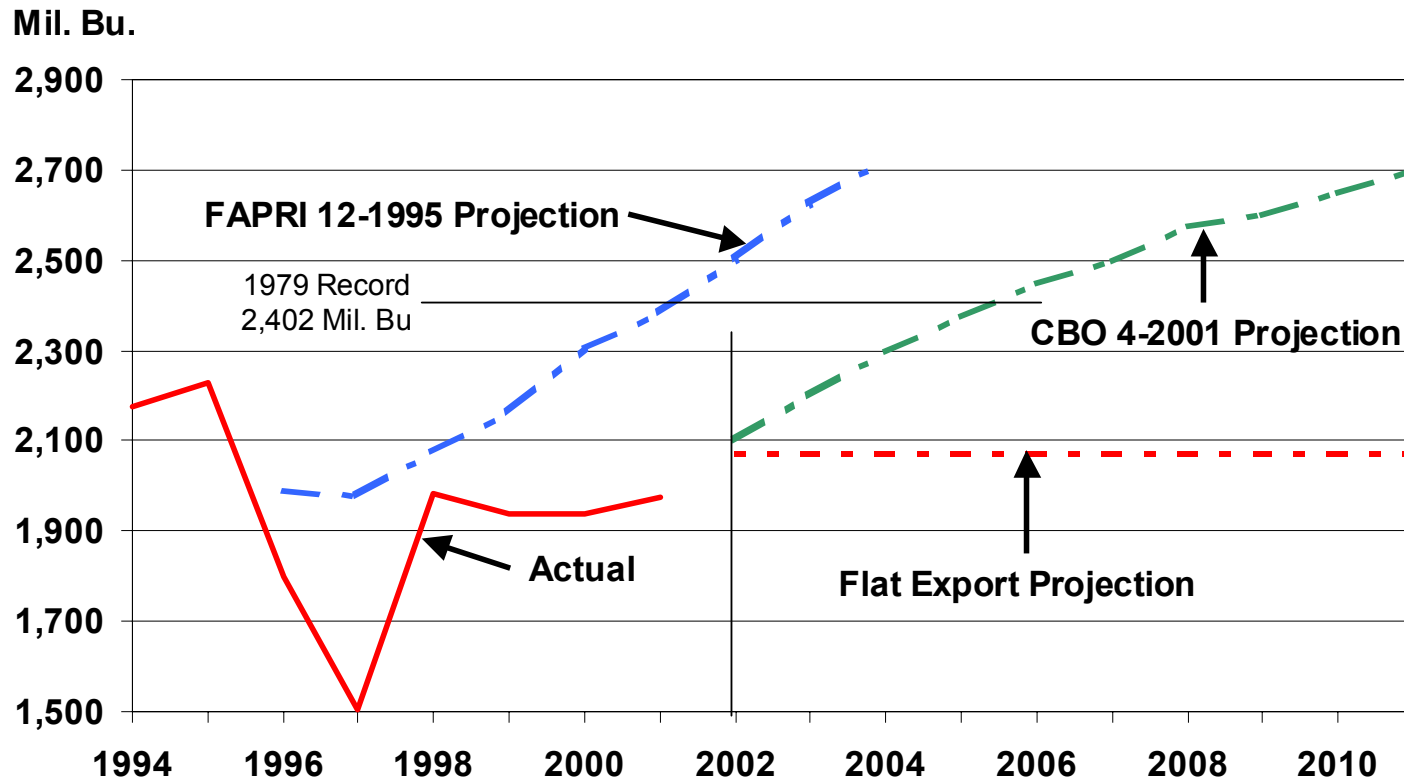
- Price, income and program cost expectations based on optimistic export projections

Net Corn Trade for China: Actual and Projections



U.S. Corn Exports

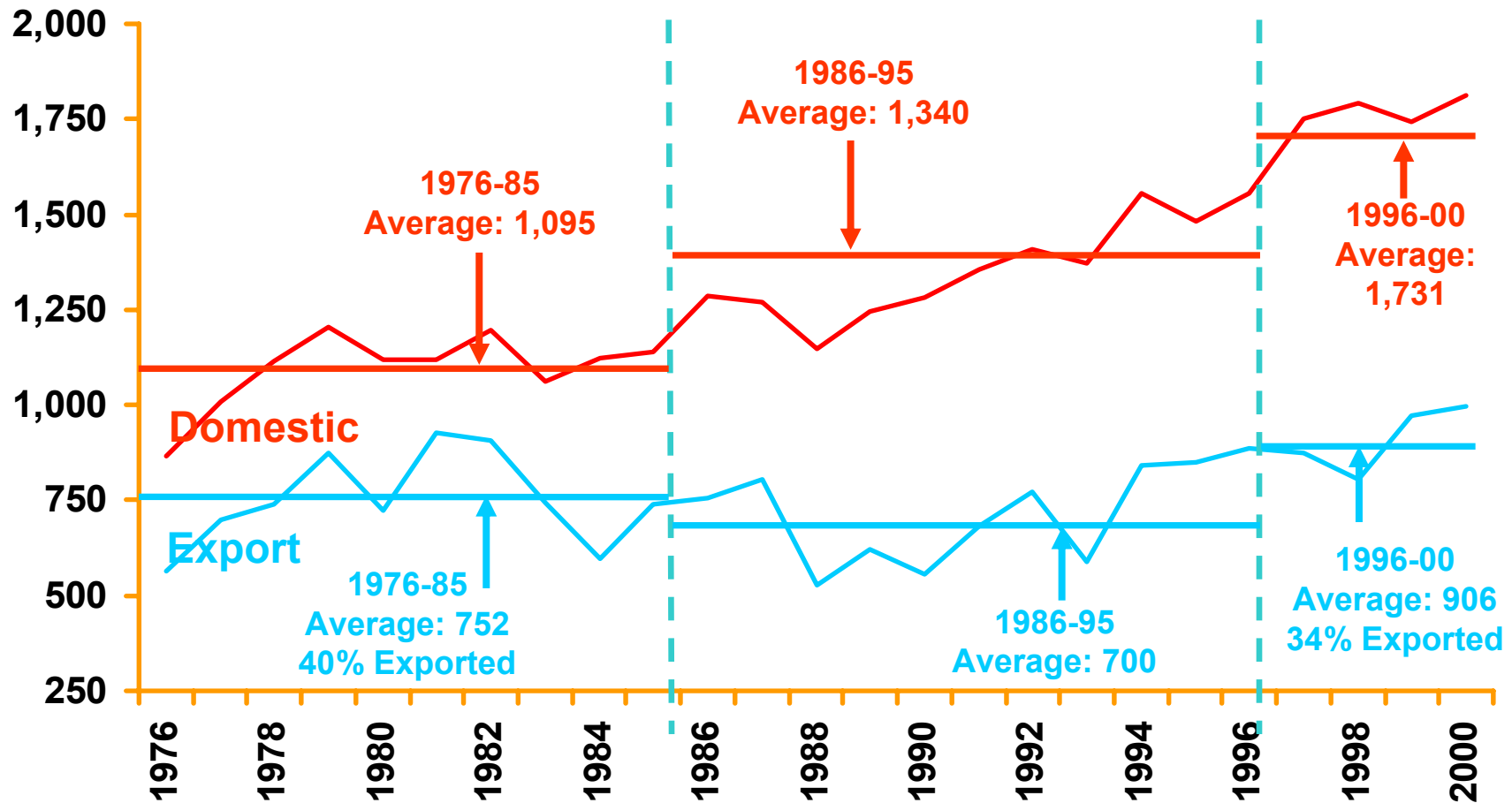
Comparison between 1995 FAPRI projection, 2001 CBO projection, 1994-2001 PS&D actual, and 2002-2011 APAC flat export projection



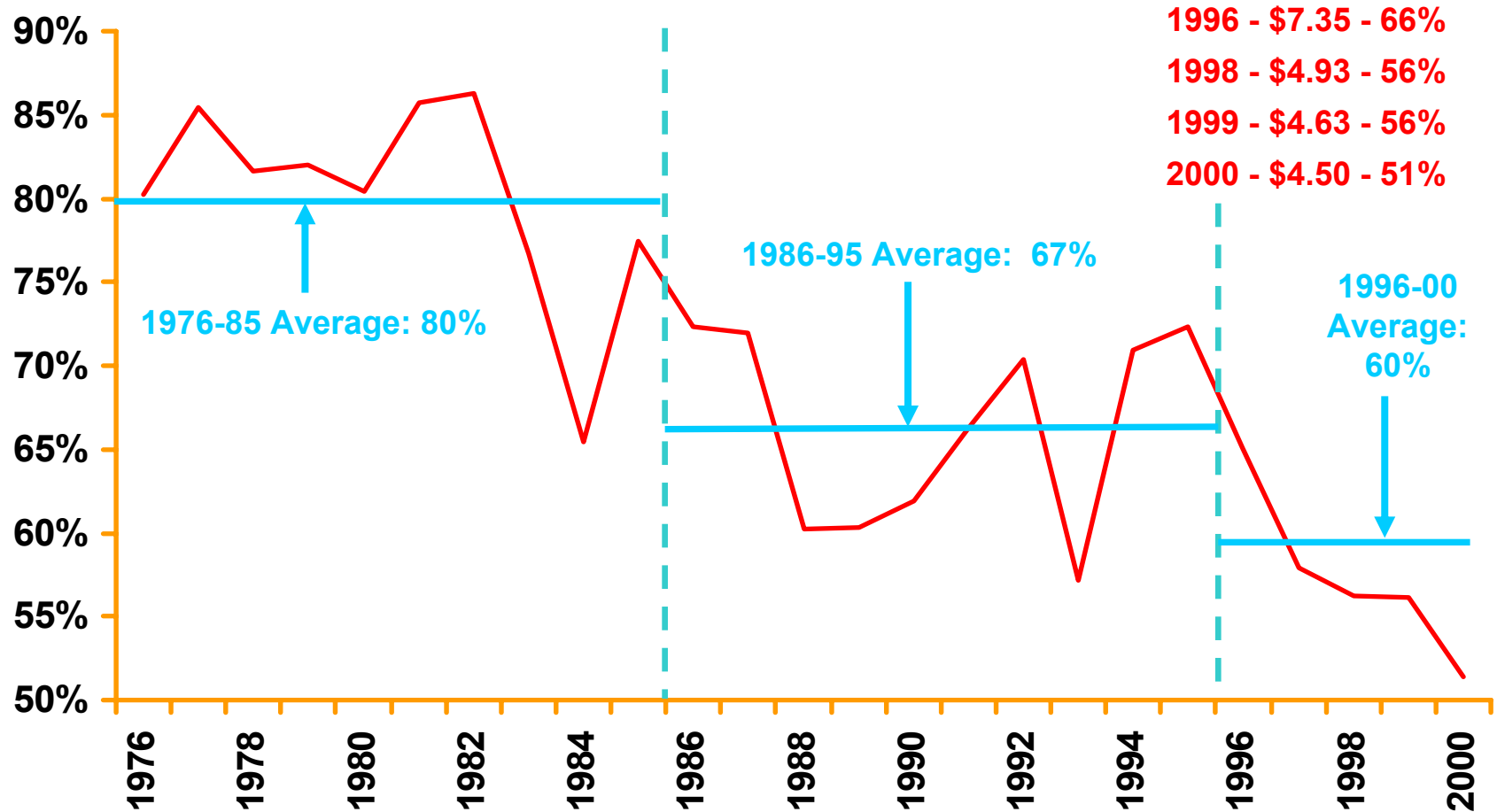
Expectations vs. Experience

- Prices and program cost based on optimistic export projections
- Major crop exports have been flat for years

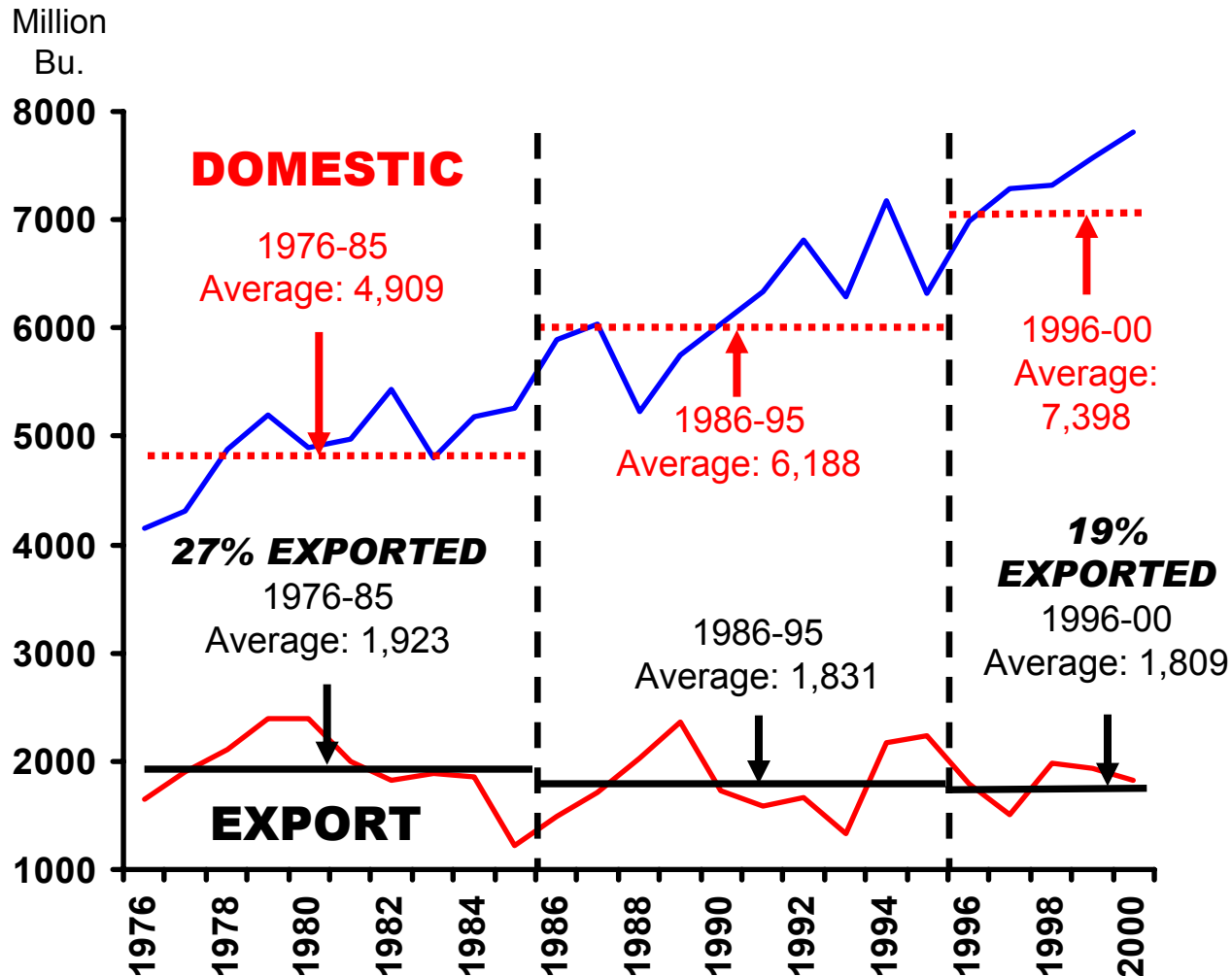
U.S. Domestic & Export Demand



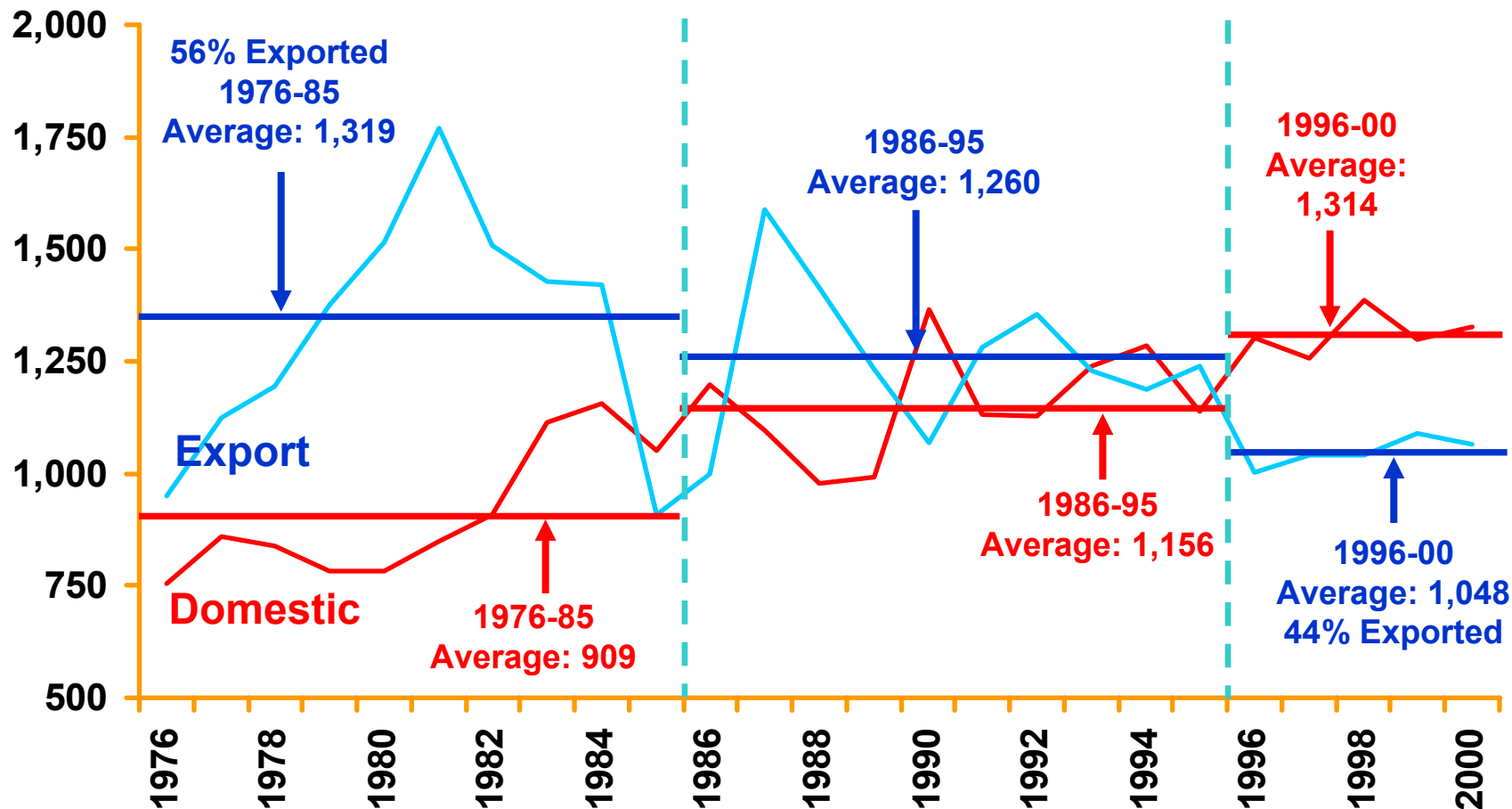
U.S. Share of World Exports



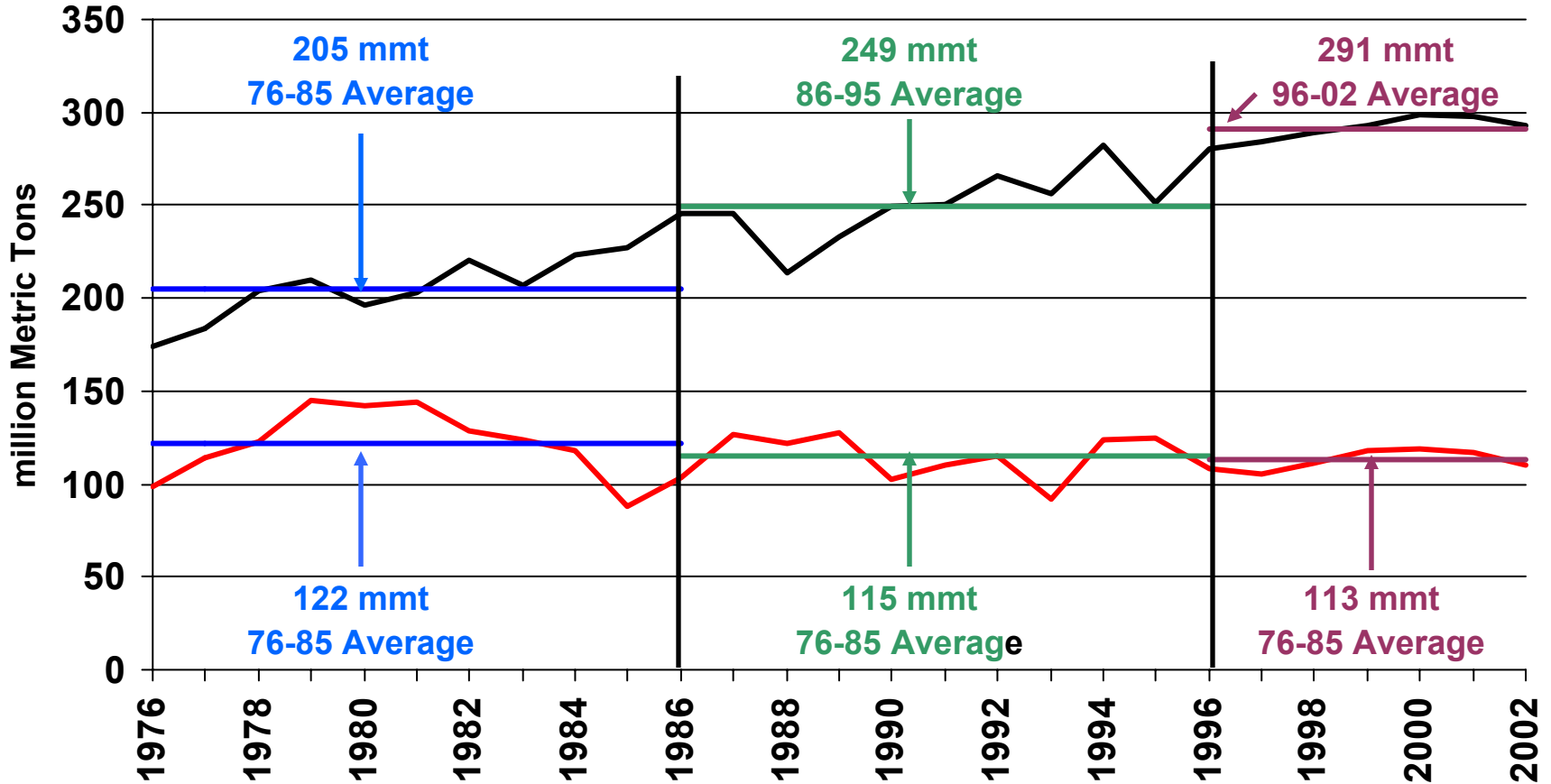
U.S. Domestic and Export Demand



U.S. Domestic & Export Demand

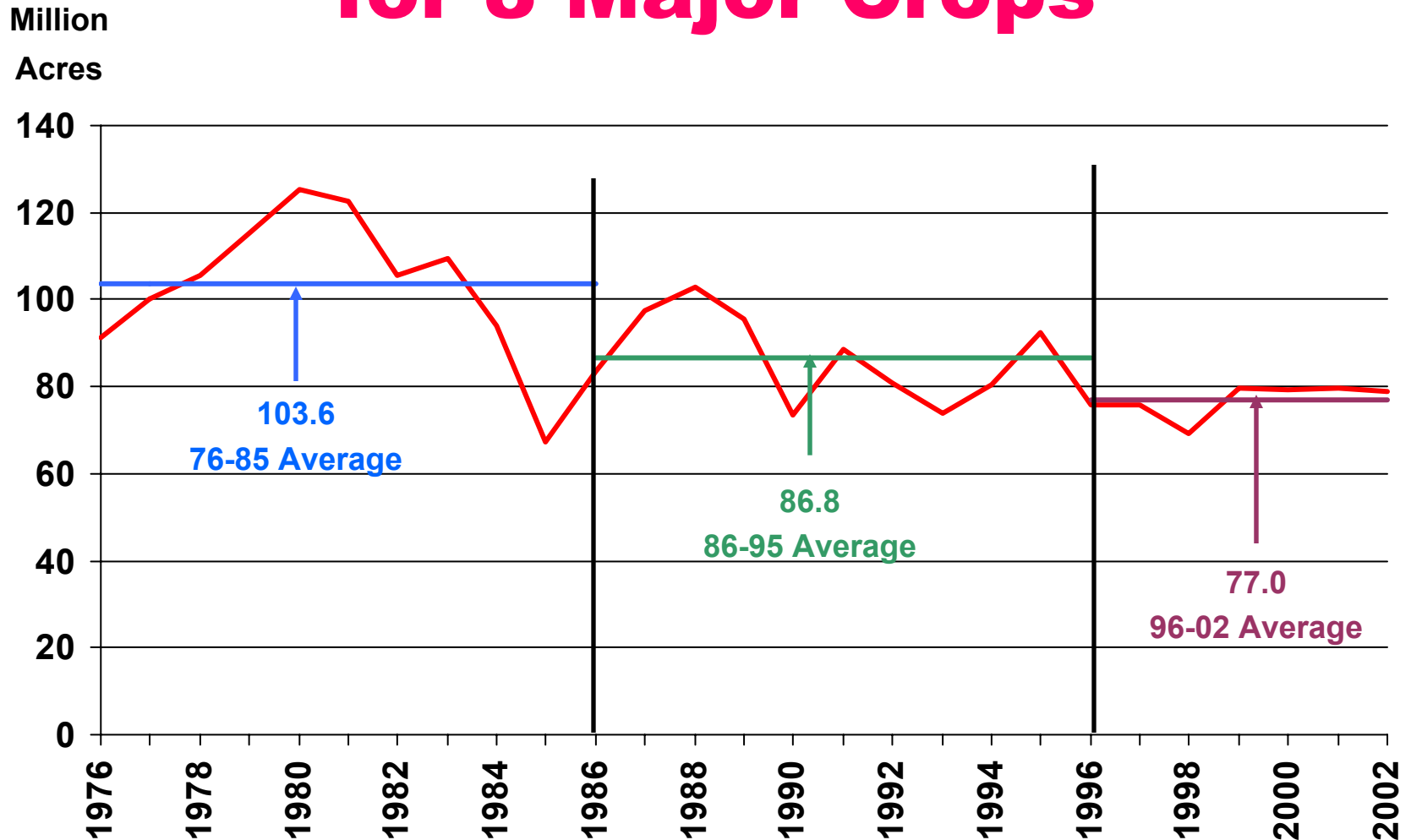


Net Export and Domestic Demand for 8 Major Crops



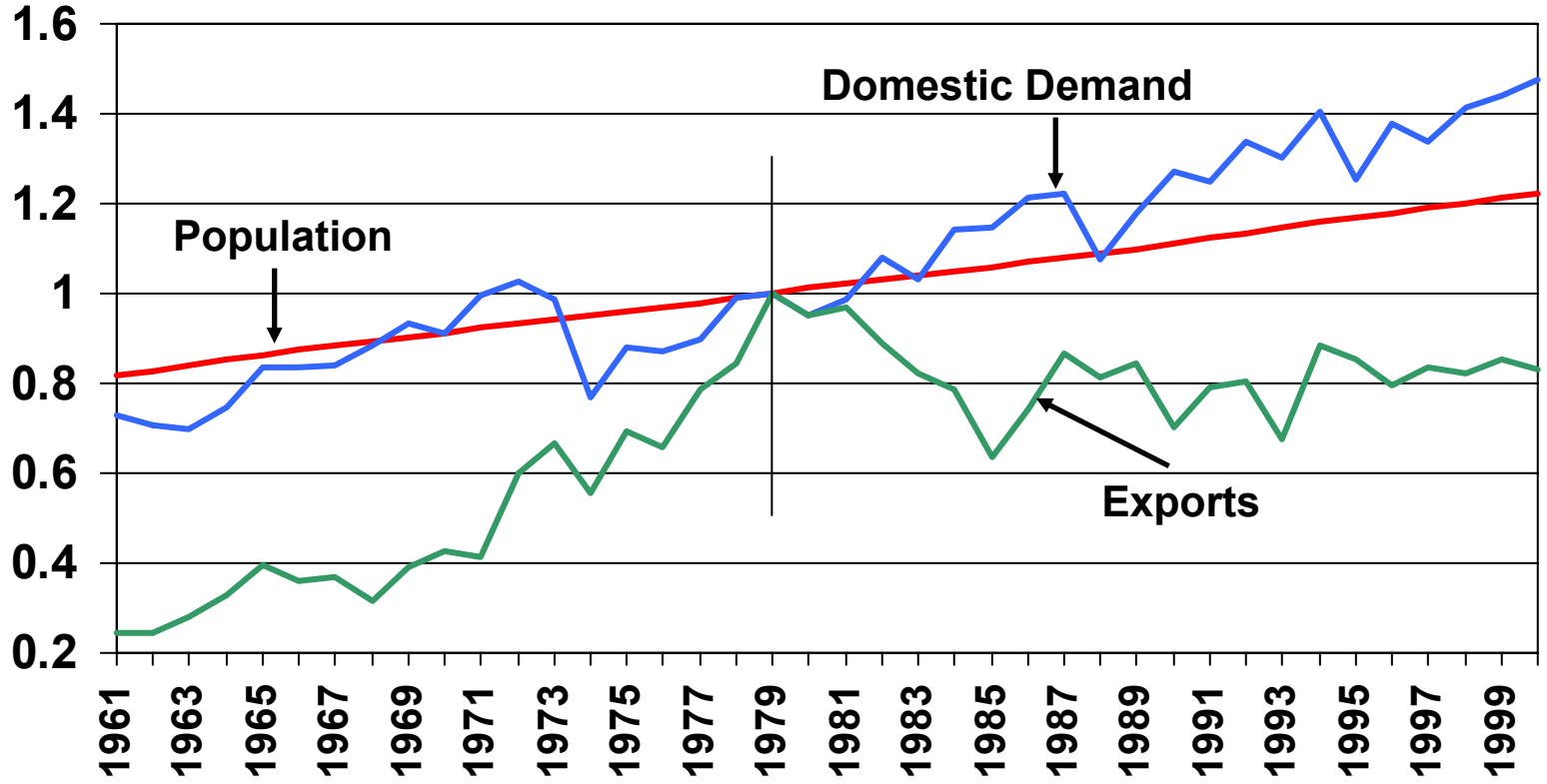
Guess which is exports and which is domestic demand

Net Export Acreage for 8 Major Crops



Domestic and Export Demand for Total Grains and Seeds, U.S. Population

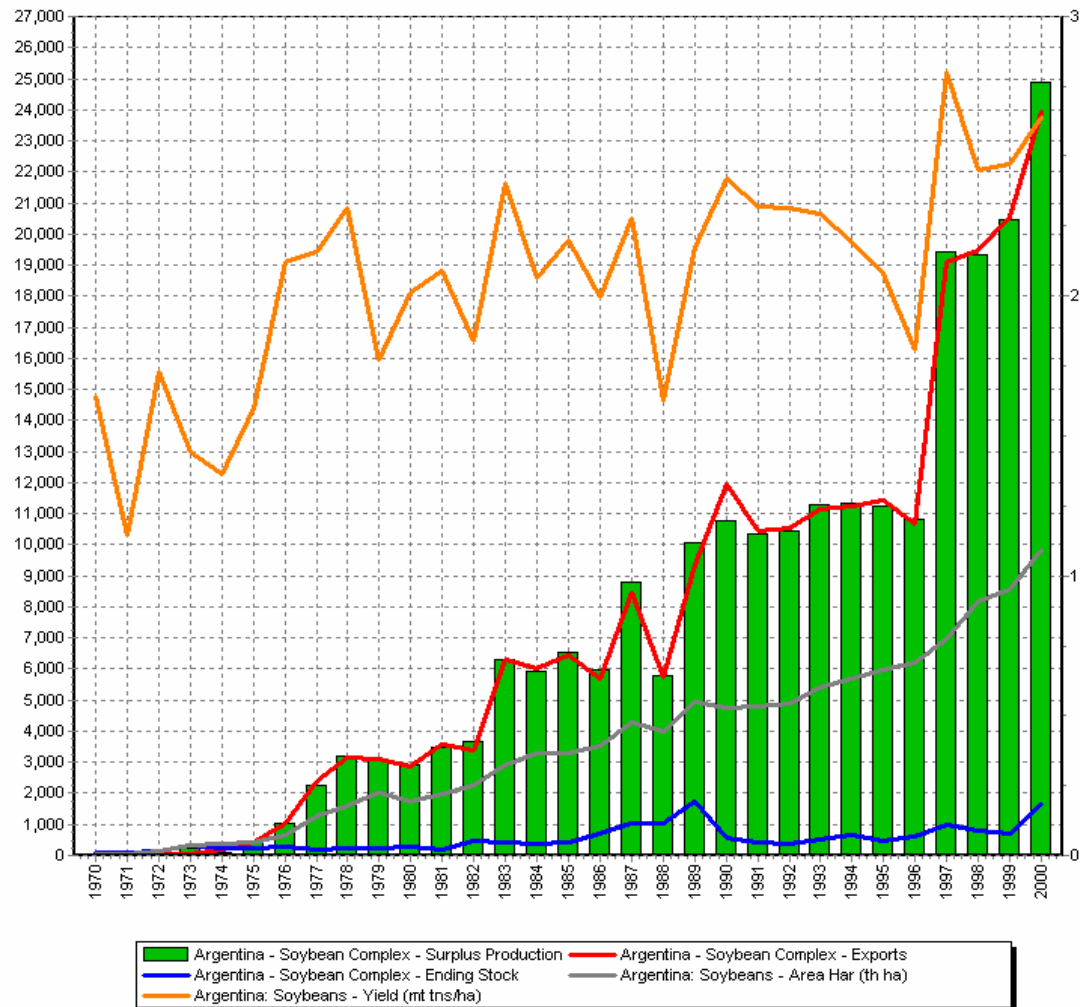
1979=100



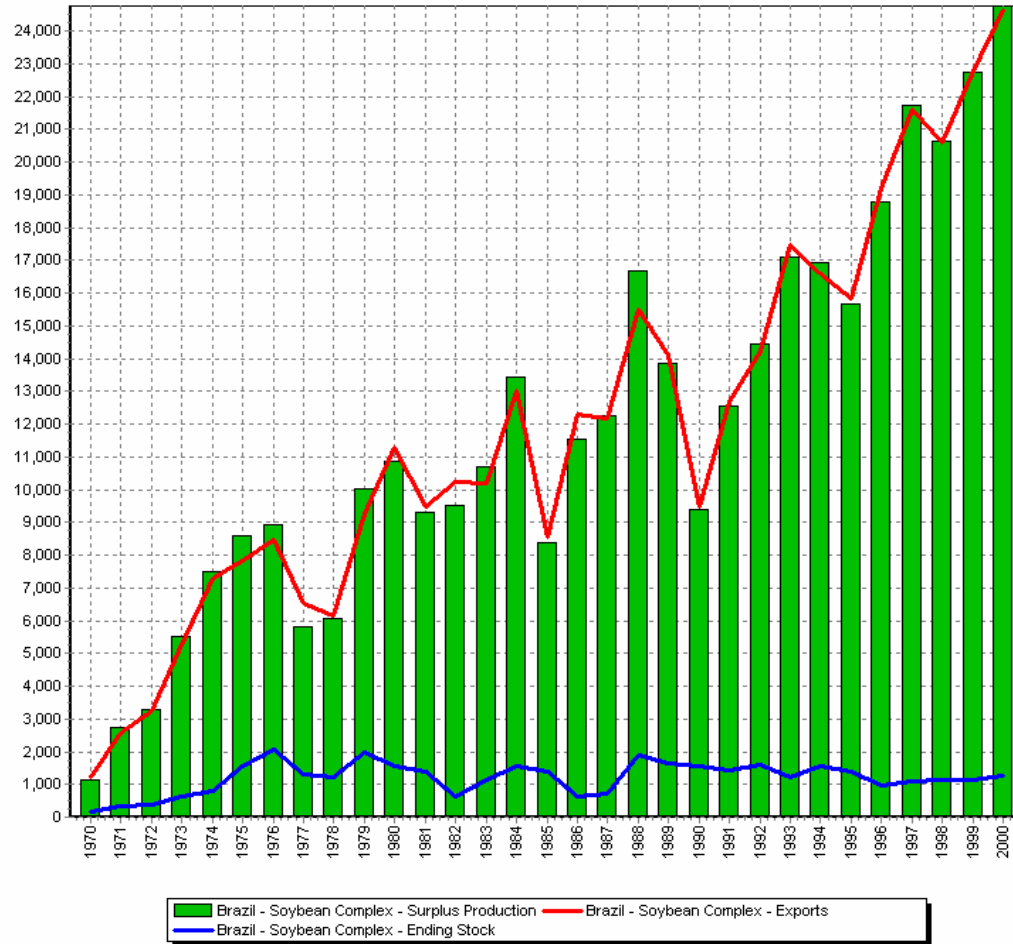
Expectations vs. Experience

- Prices and program cost based on optimistic export projections
- Major crop exports have been flat for years
- Export competitors export all their production above domestic demand in the year it is produced

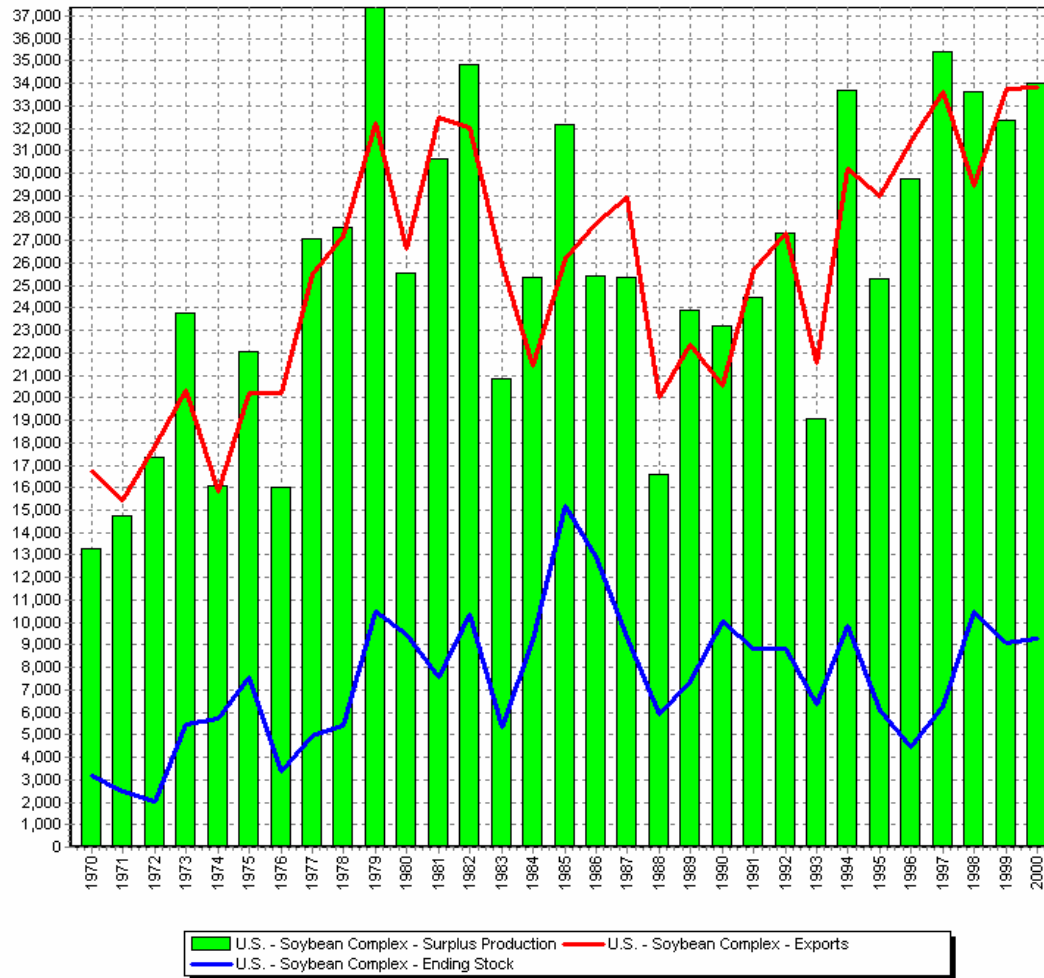
Argentine Soybean Complex Exports and Surplus Production



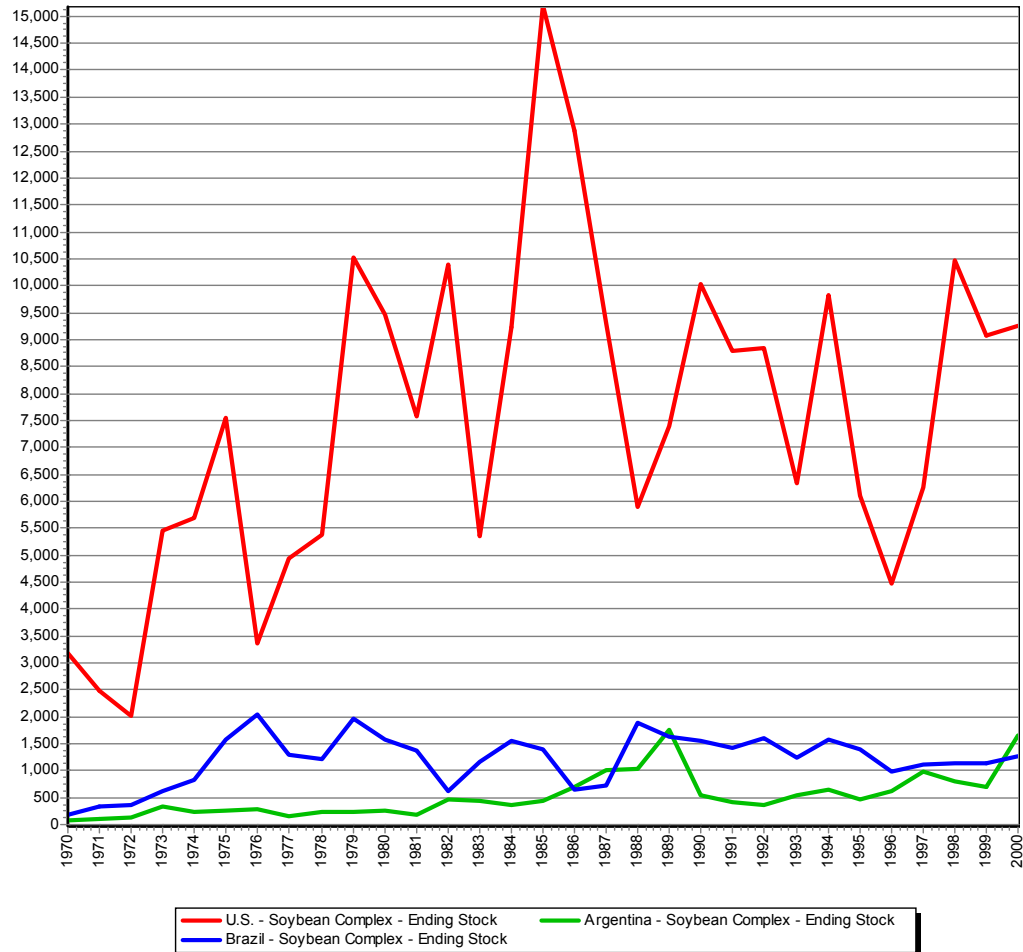
Brazilian Soybean Complex Exports and Surplus Production



U.S. Soybean Complex Exports and Surplus Production



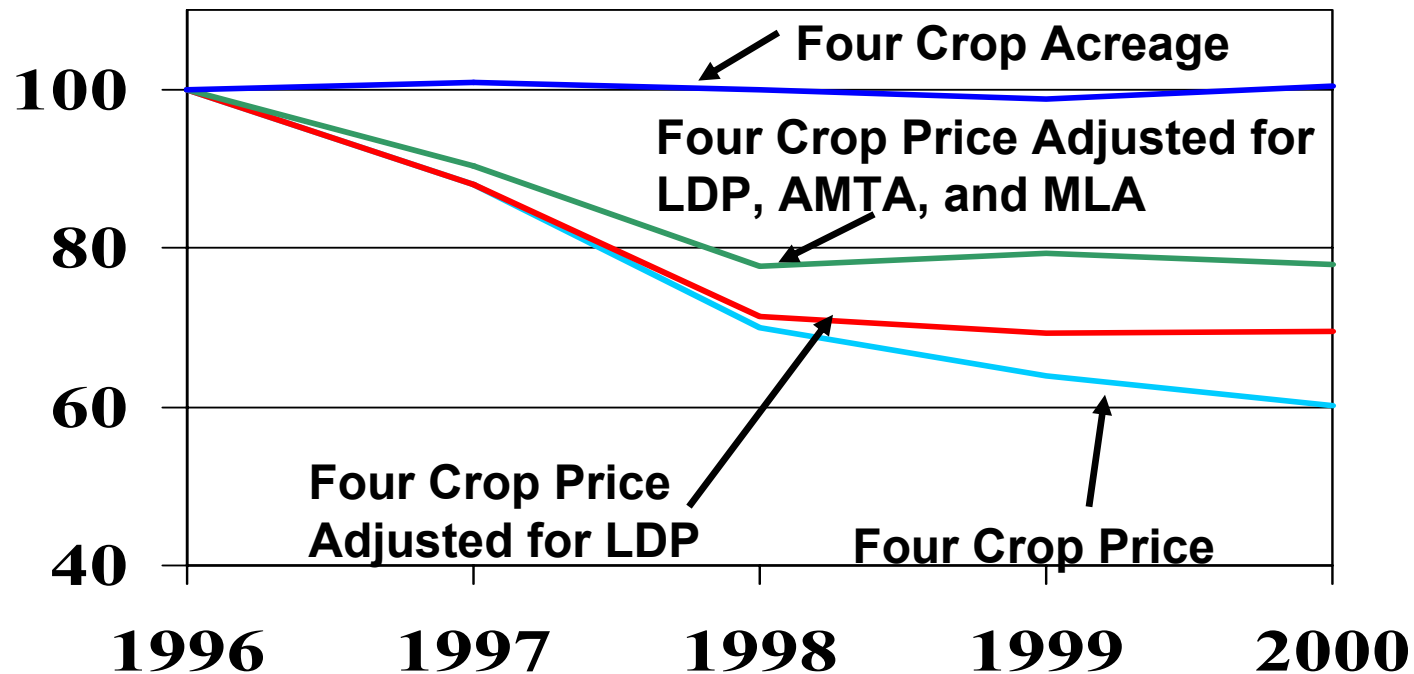
Comparison of Soybean Complex Ending Stocks



Expectations vs. Experience

- Prices and program cost based on optimistic export projections
- Major crop exports have been flat for years
- Export competitors export all their production above domestic demand in the year it is produced
- **With Planting Flexibility & Decoupled Payments Farmers Would Plant for the Market – Reduce Production When Needed**

Indexed Four Crop Acreage, Price and Price Adjusted for LDP and Contract Payments

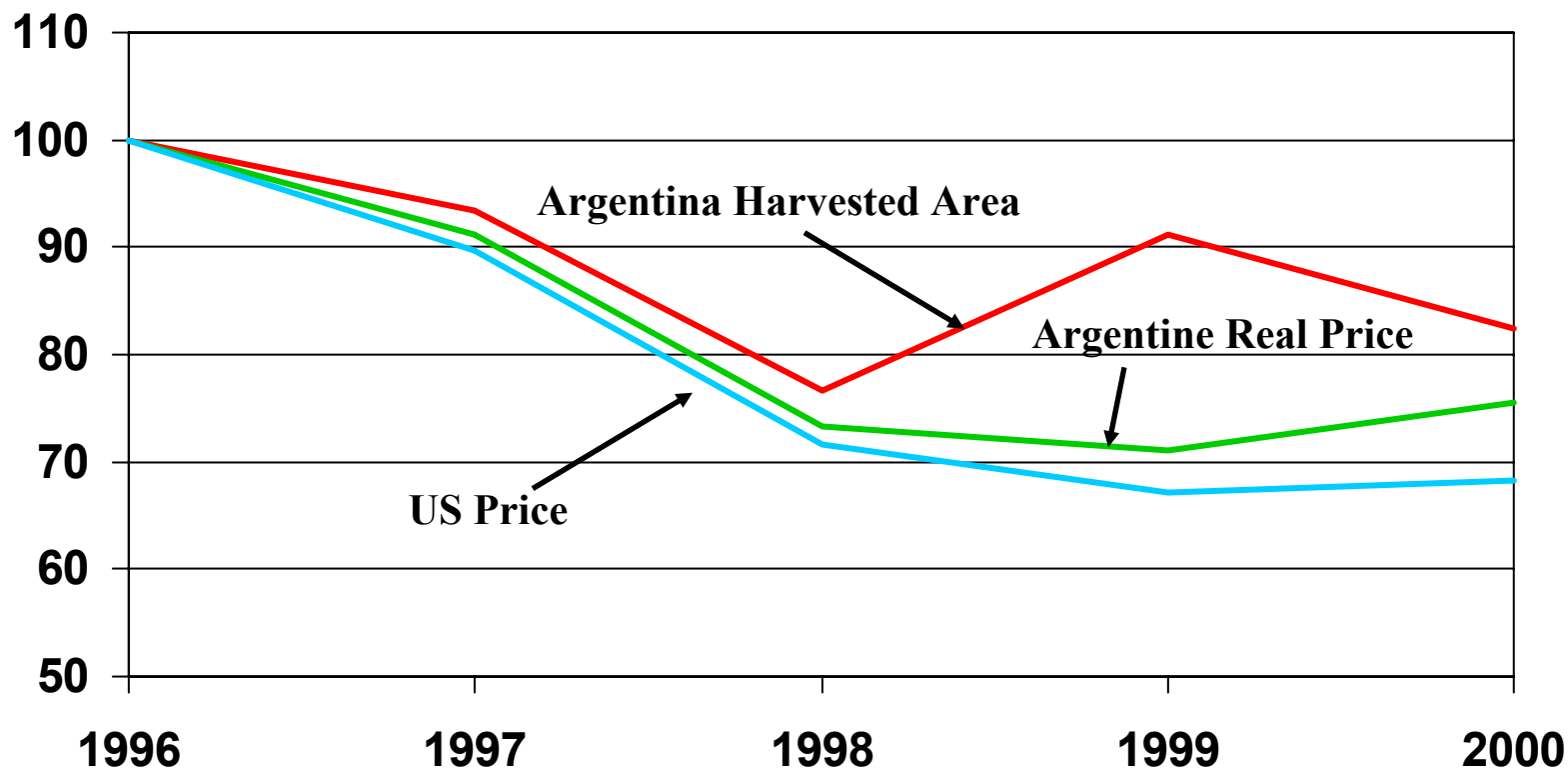


Expectations vs. Experience

- Prices and program cost based on optimistic export projections
- Major crop exports have been flat for years
- Export competitors export all their production above domestic demand in the year it is produced
- With Planting Flexibility & Decoupled Payments Farmers Would Plant for the Market – Reduce Production When Needed
- Eliminating set-asides and lower commodity prices did not cause export competitors to reduce acreage

Argentina Corn Harvested Area and Argentine Real and U.S. Nominal Corn Prices

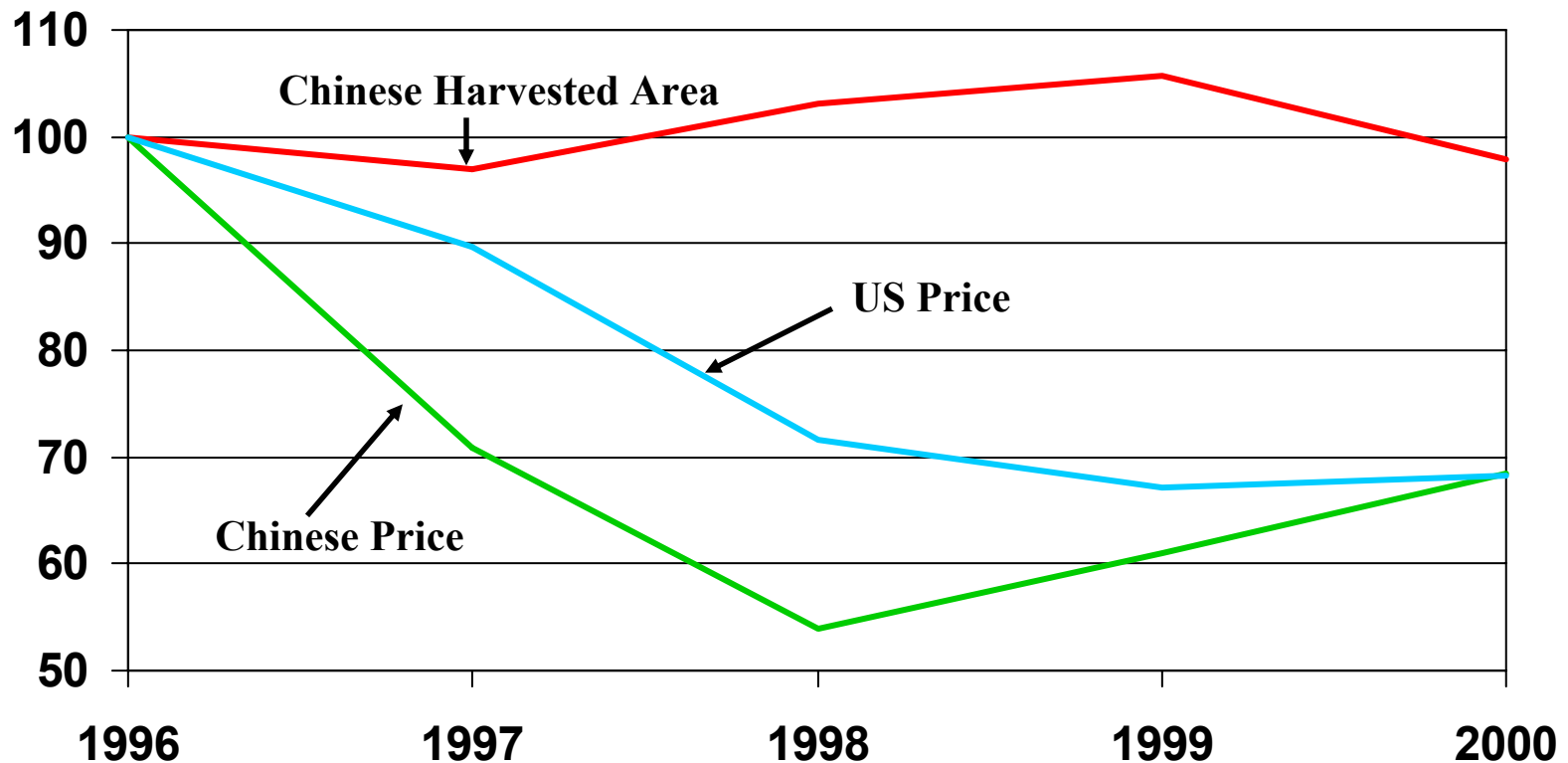
Indexed 1996=100



Data source :USDA, ERS

China Corn Harvested Area and Chinese Real and U.S. Nominal Corn Prices

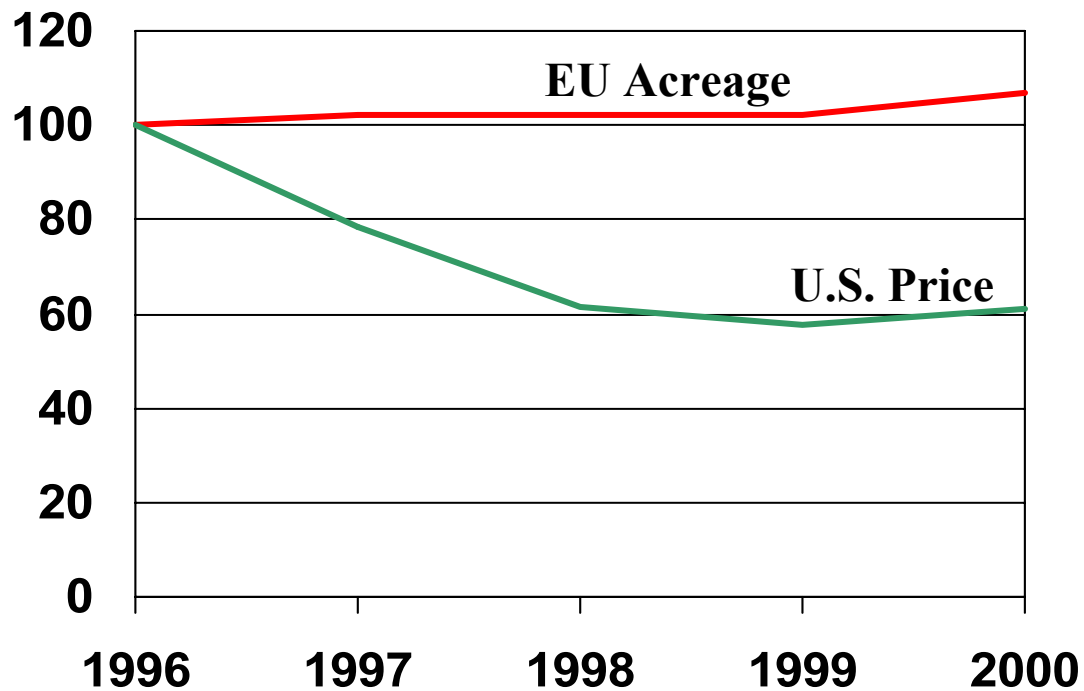
Indexed 1996=100



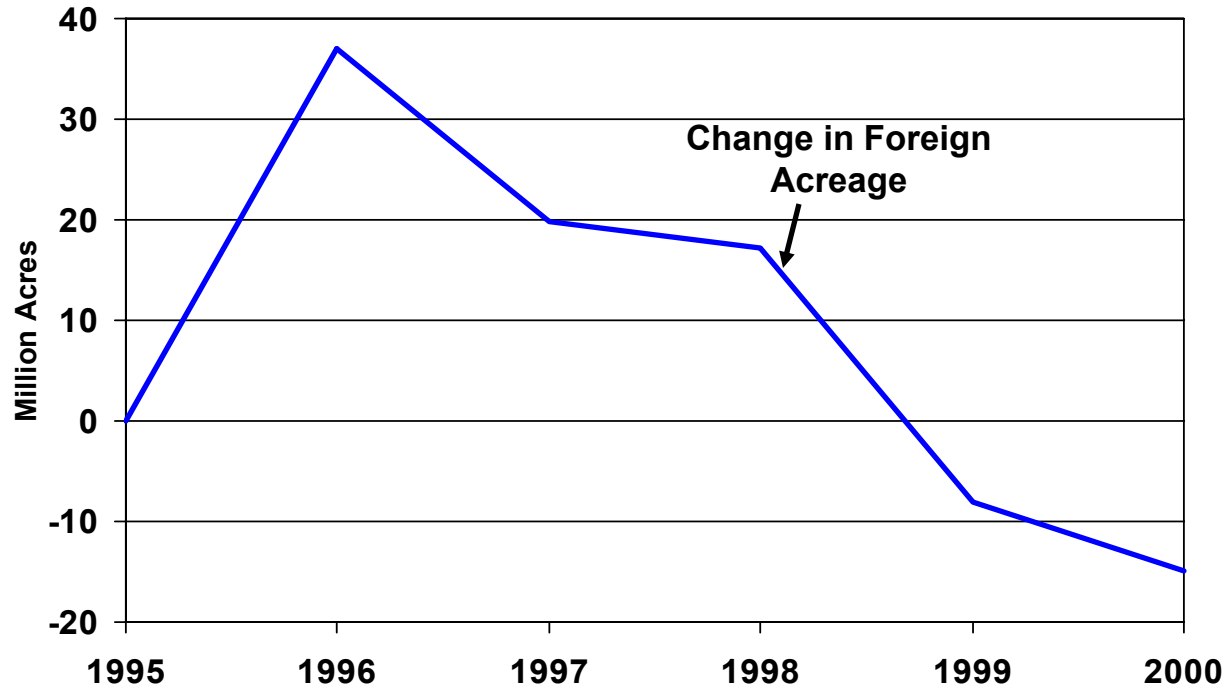
Data source :USDA, ERS

European Union Wheat Area and U.S. Price

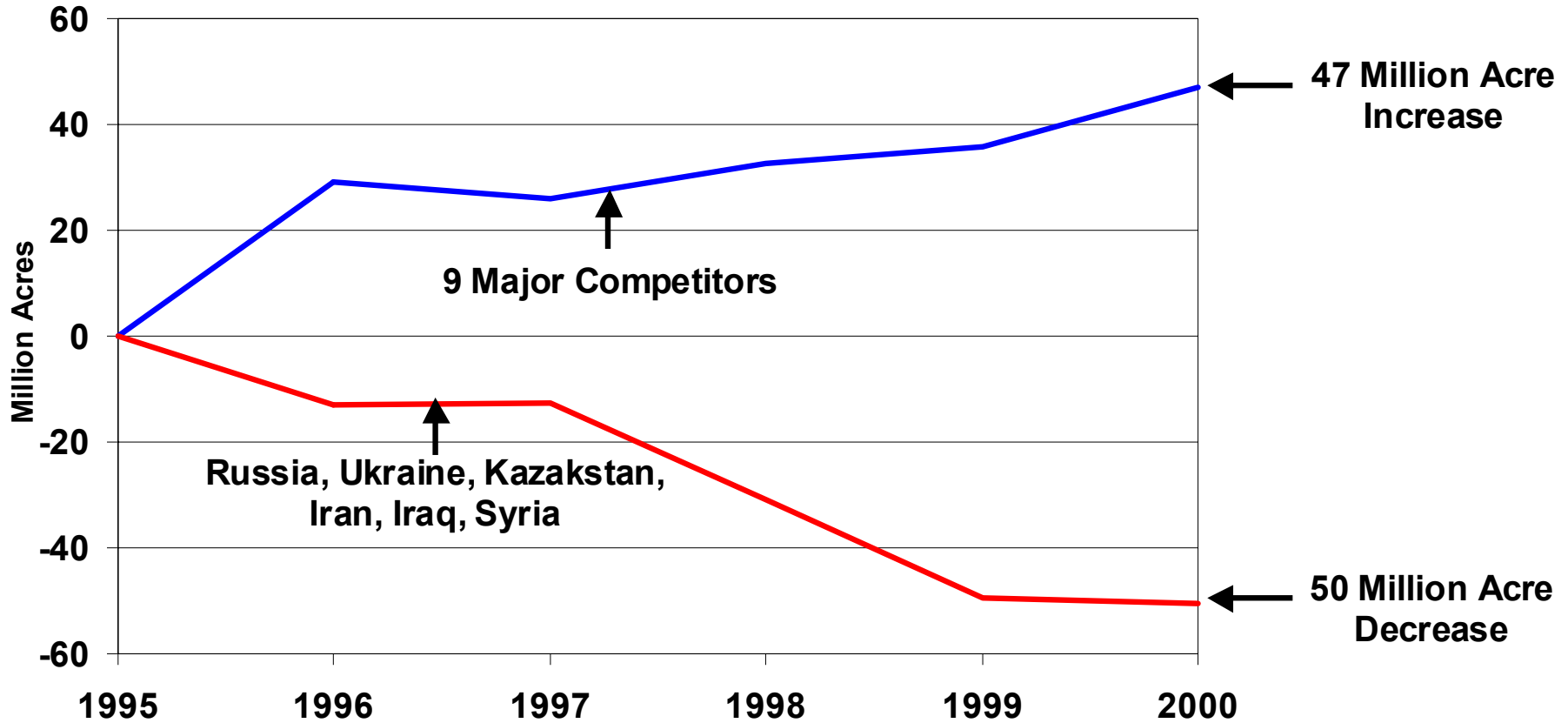
(1996=100)



Foreign Crop Acreage



Change in Foreign Crop Acreage



Weekly Policy Column

To receive an electronic version of our weekly ag policy column send an email to:

dray@utk.edu

requesting to be added to APAC's Policy Pennings listserv



For More Information ...

www.agpolicy.org

Agricultural Policy Analysis Center
The University of Tennessee
Dept. of Agricultural Economics
310 Morgan Hall
Knoxville, TN 37996-4519

dray@utk.edu
(865) 974-7407 phone
(865) 974-7298 fax

APAC - Agricultural Policy Analysis Center, The University of Tennessee - Microsoft Internet Explorer

File Edit View Favorites Tools Help

Address <http://apacweb.ag.utk.edu/>

APAC Agricultural Policy Analysis Center

The University of Tennessee

[About APAC](#) [Policy Articles](#) [Research Areas](#) [Research Tools](#) [Presentations](#) [Publications](#) [Newsletters](#)

PROGRAMS

From national farm policy to state and regional issues, APAC examines policies, regulations and conditions that affect how farmers operate their business and how the agriculture sector performs.

[What's New?](#) [Newsletters](#)

[About APAC](#) [Publications](#) [Research Areas](#) [Research Tools](#)

[Policy Articles](#) [Presentations](#) [Economics of the Ag Sector](#) [POLYSYS](#)

by: Darryll Ray [Tobacco Policy and Economics](#) [TrFARMS](#)

[Bioenergy and New Crop Uses](#) [APAC Databook](#)

[ABS](#)

Agricultural Policy Analysis Center, 310 Morgan Hall, Knoxville, TN 37996- 4519

Phone: 865.974.7407 Fax: 865.974.7298 [Contact Us](#) [Search Our Site](#) [Need Help](#) [Site Info](#) [Links](#)